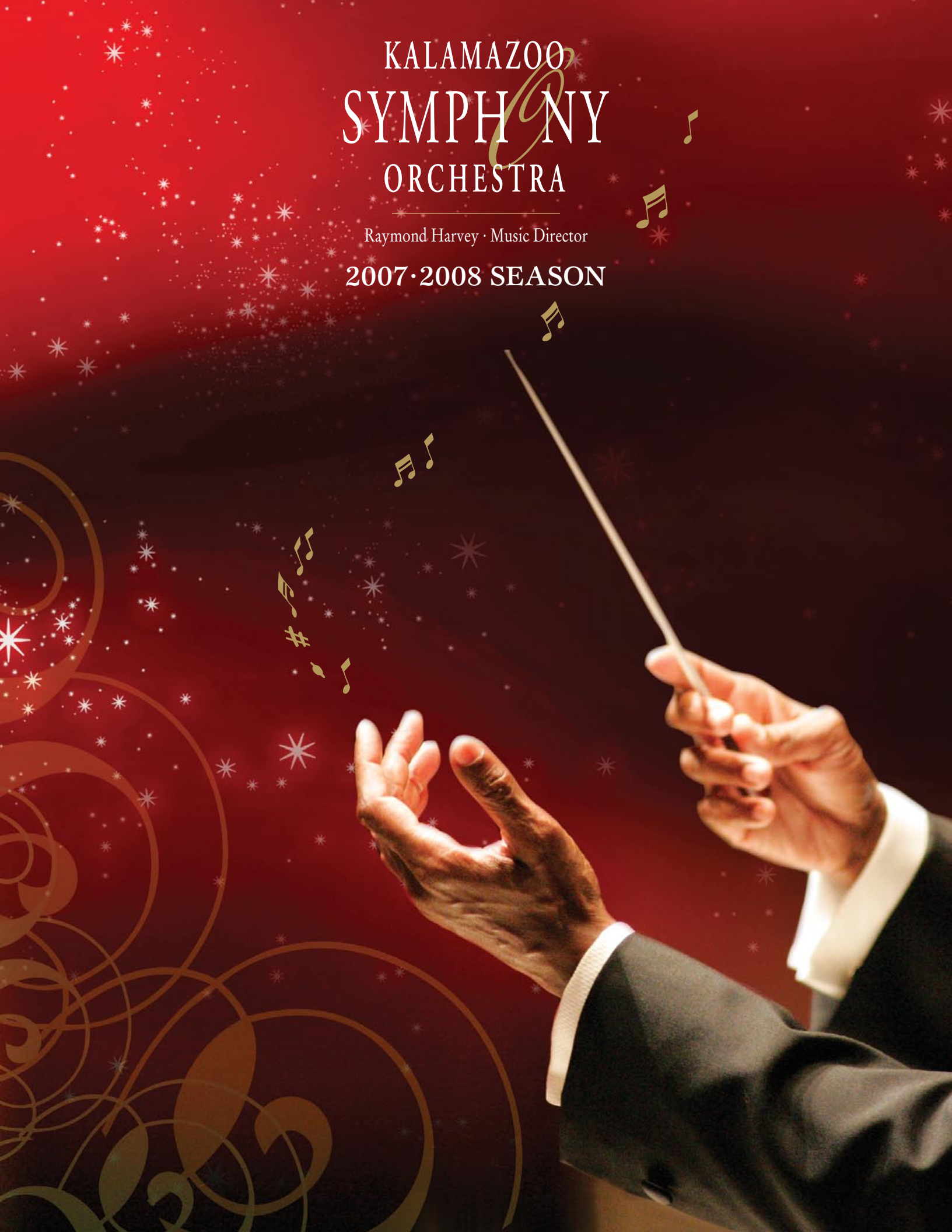


KALAMAZOO SYMPHONY ORCHESTRA

Raymond Harvey · Music Director

2007·2008 SEASON



WELCOME TO THE KSO

It's all in the *mix*! Any record producer will tell you that. But these days, any Kalamazoo Symphony Orchestra concertgoer can tell you that, too. Now you may think a concert is just about listening to music, and nothing more. But when the KSO combines listening with other sensations, the *mix* can be remarkable.

This season we'll combine the music with...

...visual delights

(*The Planets* presented with stunning 3-D images from NASA)

...oratory power

(*New Morning for the World* with Von Washington narrating words of Dr. Martin Luther King, Jr.)

...passionate drama

(*A Faust Symphony*, taking last season's opera one step further)

...hypnotic charm

(*Bolero*, unparalleled temptation)

★ Join us as we delve into rarely heard works by composers from Belgium, Nigeria, and Japan.

★ Witness the debuts of three talented, young American conductors.

★ Gain new perspectives on Elgar and Handel in *The World of...* series.

★ Introduce the young people in your life to thrilling music at the *Family Discovery* series.

There's so much music to hear, and so many wonderful ways to experience it. This is the season for it! So grab your friends, get them off the sidelines, and pull them into the *mix*!

Raymond Harvey
Raymond Harvey
Music Director

Prelude

Sponsored by

VARNUM
RIDDERING, SCHMIDT & HOWLETT LLP
ATTORNEYS AT LAW

Many *Symphonic Series* audience members come at 7 p.m. to enjoy *Prelude*, the popular pre-concert talk. Maestro Raymond Harvey sits at the piano and talks through the music of the concert—providing engaging background, playing themes, and sharing witty tales. So come early and complete your concert experience with *Prelude*.



LOOK BACK AT 2006

- 1 The KSO and **Bach Festival Chorus** perform the U.S. premiere of Ugis Praulins' *Te Deum*.
- 2 The **Kalamazoo Civic** and KSO team up for a uniquely wonderful production of Shakespeare's *A Midsummer Night's Dream*.
- 3 **Jennifer Holliday**, the Gospelfest Chorus, and the KSO rock the house in the March *KSO Pops @ MILLER* performance.
- 4 Public Radio personality **Garrison Keillor** entertained the packed auditorium in September's *Passport* concert.
- 5 The KSO celebrates Mozart's 250th birthday with *The World of...Mozart*.
- 6 Actor Tim Marrone and young local talent delight children of all ages in *The True Story of the 3 Little Pigs*.
- 7 The **Los Angeles Guitar Quartet** amazed the Opening Night audience in their performance of Rodrigo's *Concierto Andaluz*.
- 8 The KSO fills six area parks every summer for the annual *Summer Park Concerts*.



SYMPHONIC SERIES

Virtuosos from around the world, venerable masterpieces, and exciting new works make the Symphonic Series unique, not-to-be-missed concert events.

All Symphonic Series concerts are performed in Western Michigan University's Miller Auditorium. Come early for *Prelude*, the pre-concert talk by Maestro Harvey.

Series Underwriter

stryker®

Media Partners



Opening Night

Saturday, September 15, 2007, 8 p.m.

Tengstrand & Sun, Piano Duo

Raymond Harvey, Conductor

KIRKE MECHEM	The Jayhawk, Op. 43
MENDELSSOHN	Concerto for Two Pianos, A-Flat Major
RACHMANINOFF	Symphonic Dances

"The mutual affinity—almost supernatural—of these pianists—she from China, he from Sweden—is something that goes far beyond constant practice, impeccable technique or perfect memory; it is something that comes from their souls."

—*El Nuevo Herald* (Florida)

Boléro

Friday, October 12, 2007, 8 p.m.

Felix Hell, Organ

Raymond Harvey, Conductor

BERLIOZ	Overture to <i>Rob Roy</i>
JOSEPH JONGEN	Symphonie Concertante
MILHAUD	Suite Provençale
RAVEL	Boléro



"...a most extraordinary and gifted organist...a dazzling, once-in-a-lifetime kind of talent."

—*Aspen Daily News*

Taste of Italy

Friday, November 16, 2007, 8 p.m.

Benjamin Beilman, Gold Medalist, 2007

Stulberg International String Competition

Raymond Harvey, Conductor

VERDI	Overture to <i>I Vespri Siciliani</i>
SIBELIUS	Violin Concerto in D Minor, Op. 47
PONCHIELLI	Dance of the Hours
MENDELSSOHN	Symphony No. 4 "Italian"

Let the KSO take you away to sample some of the delectable Italian melodies and harmonies, and enjoy the exuberance of the young Stulberg winner.

Co-Sponsors



Guest Artist Sponsor

*Alice Mullen
Distinguished Pianists
Endowment Fund*

Co-Sponsors



Major Sponsor



Co-Sponsors



Guest Artist Sponsor

*Barry Ross Guest
Violinist Fund*



We Have a Dream

Saturday, January 19, 2008, 8 p.m.
Von Washington, Narrator
Raymond Harvey, Conductor

FELA SOWANDE	African Suite for Strings
JOSEPH SCHWANTNER	New Morning for the World
R. STRAUSS	Death and Transfiguration



Popular playwright, actor, and director Von Washington joins the KSO to celebrate the dream of Dr. Martin Luther King, Jr. and the dream of our shared future in Kalamazoo.

The Legend of Faust

Friday, February 15, 2008, 8 p.m.
WMU Men's Chorus
David Little, Director

**Portage Northern High School
Men's Chorus**

Catherine Adams, Director
Raymond Harvey, Conductor

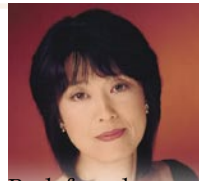
LISZT	A Faust Symphony
-------	---------------------

This symphonic poem from the Hungarian-born Liszt probes the reflections of the ill-fated Faust, his beloved Gretchen, and the satanic Mephistopheles.

Japanese Garden

Friday, March 28, 2008, 8 p.m.
Reiko Yamada, Piano
Raymond Harvey, Conductor

RESPIGHI	Gli Uccelli (The Birds)
IFUKUBE	Ritmica Ostinata
TAKEMITSU	Dream/Window
HINDEMITH	Symphonic Metamorphoses



Back from her successful performance in Japan last year, KSO pianist Reiko Yamada will amaze you with her performance of Ifukube's work. Come hear this music tribute to Japan.

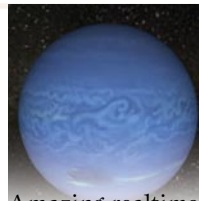
The Planets

Friday, April 18, 2008, 8 p.m.
**Karin Hendrickson (Weber),
Christopher Ramaekers (Beethoven),
& Nicholas Chong (Dvorák),
Guest Conductors**

**Portage Northern High School
Women's Chorus**

Catherine Adams, Director
Raymond Harvey, Conductor

BEETHOVEN	Coriolan Overture
WEBER	Oberon Overture
DVOŘÁK	Carnival Overture
HOLST	The Planets



Amazing realtime 3-D animation of deep space images accompany the otherworldly strains of The Planets.

Major Sponsor
National City

Co-Sponsors

**GREENLEAF
TRUST**


Major Sponsor

**WESTERN MICHIGAN
UNIVERSITY**

Guest Artist Sponsor
*Arcadia Investment
Management*

Co-Sponsors

nwa
NORTHWEST AIRLINES®
Official airline of the KSO

**WISER
ASSOCIATES**
A PROFESSIONAL FIRM

Video Sponsor
*KN1 Southwest Michigan
Imaging Center*

KSO presents

Movie Magic

Music of John Williams and other Great Movie Classics

Co-Sponsors



Media Partner

KALAMAZOO GAZETTE

Saturday, October 27, 2007, 8 p.m.

Rich Ridenour, *Piano*

Barry Ross, *Conductor*

Chenery Auditorium

Hear your KSO play great film score classics from *Casablanca*, *Star Wars*, *Fantasia*, *The Sting*, *Somewhere in Time*, *Pink Panther*, *Ghostbusters*, *E.T.*, *Forrest Gump*, and more. And enjoy the inimitable humor of "Barry 'n Rich."



THE GILMORE

Irving S. Gilmore International Keyboard Festival

Gilmore Keyboard Festival Concert

Friday, May 2, 2008 • WMU Dalton Center Recital Hall

Saturday, May 3, 2008 • St. Cecilia Music Society, Grand Rapids

Members of the Kalamazoo Symphony and Grand Rapids Symphony with Music Directors Raymond Harvey and David Lockington join with great piano soloists for a unique collaborative concert not to be missed.

Gilmore Gala

Saturday, May 10, 2008, 8 p.m. • Chenery Auditorium

Ingrid Fliter, *Piano*

Raymond Harvey, *Conductor*

CHOPIN

Piano Concerto No. 2, Op. 21

BEETHOVEN

Piano Concerto No. 1, Op. 15

Sponsor

National City

Hold these dates and watch for the Gilmore Festival brochure for details.



PICTURE YOURSELF IN...



Miller Auditorium

You've read about it in the paper, heard about it on the radio, and now over two thousand people gather in the large hall for a major community arts event—the *Symphonic Series*. Your KSO, under the expert baton of Maestro Raymond Harvey, takes the stage and offers you music that has moved generations of people across many cultures. Whether alone, coupled with a world-class soloist, or joined by a local chorus, the KSO's artistry reaches the depths of human feeling and stirs the soul. Make it an elegant night out or casual evening—your choice.



Light Fine Arts Center

Walking into the hall is a step back in time as Raymond Harvey guides the audience into *The World of...* You travel behind the music to explore the life and times of the composer, the influences on his music, and the legacy that remains. Using the full resources of the orchestra, Maestro Harvey journeys into the worlds of Edward Elgar and Georg Friedrich Handel.



Chenery Auditorium

The large chandeliers and the ornate beauty of Chenery tell you that you and the children with you are in for a treat. The *Family Discovery Series* dazzles elementary school-aged children with interactive stories and great orchestral sounds. Whole new worlds come alive for children as they enjoy the *Symphony Spooktacular* or *Rotten Ritchie and the Ultimate Dare*. (Adults love it, too!)



Epic Theatre

The theatre becomes bistro as patrons grab a cup of coffee and sit at their tables. The orchestra's *Artists in Residence* and small ensembles serve an array of chamber music as patrons enjoy their friends, the music, and a refill. Following the concert, patrons and musicians mingle in the theatre over dessert from the Epic Bistro.

THE WORLD OF...

Extremely popular, "The World of..." series at Kalamazoo College probes the life and times of featured composers. Each concert presents a variety of musical works plus a multimedia commentary on the social, artistic, and cultural realities of the particular time and place in which the composer worked. Maestro Raymond Harvey is your guide for each exciting journey to the composer's world.



The World of...Edward Elgar

Sunday, September 30, 2007, 3 p.m.
Raymond Harvey, *Conductor*

The 150th anniversary of his birth (1857–1934)

The World of...Handel

Sunday, April 6, 2008, 3 p.m.
Raymond Harvey, *Conductor*

Innovator of the English Oratorio and giant of the late Baroque (1685–1759)



EPIC EVENINGS

The Epic Center (corner of Burdick and Lovell Streets) in downtown Kalamazoo is your destination for an intimate evening with the KSO's Burdick-Thorne String Quartet and other KSO musicians. Bring a friend, grab a table, and settle in with your complimentary coffee for an evening of great music in the cozy Epic Theatre. Audience reception follows!

Series Sponsors



Media Partner



Fall Evening

Friday, October 5, 2007, 8 p.m. | Saturday, October 6, 2007, 8 p.m.

Winter Evening

Friday, February 1, 2008, 8 p.m. | Saturday, February 2, 2008, 8 p.m.

Spring Evening

Friday, March 14, 2008, 8 p.m. | Saturday, March 15, 2008, 8 p.m.

FAMILY DISCOVERY SERIES

A delightfully entertaining introduction to symphonic music for children ages 4–12, the KSO's *Family Discovery Series* at Chenery Auditorium engages children (and adults!) with great music and interactive drama. The concert lasts about one hour, but come early for the pre-concert activities.

Co-Sponsors



HEART♥CENTER
for excellence

S K P
DESIGN
AMAZING INTERIORS

TowerPinkster
Making it real

Media Partners

KALAMAZOO GAZETTE



Symphony Spooktacular

Sunday, October 28, 2007, 3 p.m.

Barry Ross, *Conductor*

Bad bats and spooky spells make this new KSO production a frightfully fun time. Follow the exploits of three young children as they unlock the secrets of the mysterious spellbook to the music of Harry Potter, Star Wars, and more. And kids, don't forget to come in costume for this Halloween spectacular!

Rotten Richie and the Ultimate Dare

based upon the book by Patricia Polacco

Sunday, February 24, 2008, 3 p.m.

Adaptation by Jane Rooks Ross & Barry Ross

Tim Marrone, *Actor*

Barry Ross, *Conductor*

It seems like Richie's entire goal in life is to make Trisha's impossible—especially when he takes to teasing her about her beloved ballet class. So she challenges Richie to perform in her ballet recital, and Richie agrees, under one condition: Trisha has to join his hockey team for the big game! Follow these sibling shenanigans and enjoy the music of Rossini, Tchaikovsky and more.



Barry's Buddies

Purchase your *Family Discovery Series* tickets and children become members of **Barry's Buddies**. Every **Barry Buddy** receives a birthday card from conductor Barry Ross, opportunities to meet with Barry prior to Family Discovery concerts, and more. A **Barry's Buddy** Kit will be mailed to you upon receipt of your order.



Musical Storybooks

These programs at the Epic Center invite children ages 3–6 to explore stories, hands-on activities, and music performed by the KSO's Burdick-Thorne String Quartet.

The Maestro Plays

Saturday, November 10, 2007, 10 a.m.

Berlioz the Bear

Saturday, February 9, 2008, 10 a.m.

Series Sponsor

i Irwin Union
Bank



CHASE SUMMER PARK CONCERTS

Jerry Dixon, *Singer*
Raymond Harvey, *Conductor*

Since 1973, the Kalamazoo Symphony Orchestra has toured area parks providing free concerts. As the sun sets and the evening cools, the KSO presents light classical and popular music, perfect for a picnic or a relaxing evening with friends.

Wednesday, July 11, 8:15 p.m.	Sherman Lake YMCA
Sunday, July 15, 8:00 p.m.	Kalamazoo
Monday, July 16, 8:00 p.m.	Parchment
Wednesday, July 18, 8:00 p.m.	Plainwell
Thursday, July 19, 8:00 p.m.	Three Rivers
Friday, July 20, 8:00 p.m.	Portage

Co-Sponsors

 **BRONSON**

meijer

MILLER 
JOHNSON
Attorneys and Counselors



SINGLE CONCERT TICKETS*

Tickets for individual concerts go on sale Monday, August 13, 2007.

You can purchase discounted tickets anytime during the season by:

- purchasing a Flex Ticket (four or more events)
- purchasing online (discounts on tickets priced at \$20 or more)
- purchasing in a group of 15 or more

SERIES/EVENT	VENUE	PRICES
Symphonic Series	Miller Auditorium	\$49, \$39, \$29, \$19 (students half-price) Harvey's Hideaway \$5 in advance, \$7 on concert day
Movie Magic	Chenery Auditorium	\$40, \$30, \$20, \$10 (students half-price)
The World of...	Light Fine Arts Center	\$20 general admission (students \$5)
Epic Evenings	Epic Theatre	\$18 general admission (students \$5)
Family Discovery	Chenery Auditorium	\$11, \$9
Musical Storybooks	Epic Center	\$4 general admission (call 349-7759)

* Unless otherwise noted, tickets may be purchased at the Miller Ticket Office, phone (269) 387-2300 or (800) 228-9858.
You may order online at **KalamazooSymphony.com**.

Mark Your Calendar for These KSO Events

Michigan Festival of Sacred Music

featuring Raymond Harvey, *Piano*

and KSO Artists in Residence

Thursday, November 8, 2007

7:30 p.m., First Baptist Church

MESSIAEN *Quartet for the End of Time*

The Nutcracker

with the Ballet Arts Ensemble

Cathleen Huling, *Artistic Director*

Barry Ross, *Conductor*

Saturday, December 15, 2007, 2 p.m. & 7 p.m.

Sunday, December 16, 2007, 2 p.m.

Chenery Auditorium



Symphony Serenades

Sunday, February 10, 2008

Valentine's Brunch at The Union Cabaret & Grille

Support Your KSO

Imaginative programming. Exciting artistic collaborations.

Rewarding community partnerships. Outstanding education programs.

Your 2007 gift to the KSO helps us explore new musical worlds,
while keeping our music accessible to many who are not able to hear us in the concert hall.

Please consider adding your 2007 contribution when renewing your seats, and help keep
the Kalamazoo Symphony Orchestra one of the best professional regional orchestras in the U.S.

KALAMAZOO
SYMPHONY
ORCHESTRA

Raymond Harvey • Music Director

359 South Kalamazoo Mall, Suite 100

Kalamazoo, Michigan 49007

TEL (269) 349-7759 • FAX (269) 349-9229

www.KalamazooSymphony.com



...visual delights

...oratory power

...passionate drama

...hypnotic charm

Special thanks to carol a.s. derks | derkstudio (brochure design), Superior Colour Graphics (printing), John Lacko Photography

KALAMAZOO
SYMPHONY
ORCHESTRA

Raymond Harvey • Music Director

359 S. Kalamazoo Mall, Suite 100
Kalamazoo, Michigan 49007

www.KalamazooSymphony.com

**NONPROFIT ORG.
U.S. POSTAGE
PAID
KALAMAZOO, MI
PERMIT NO. 762**