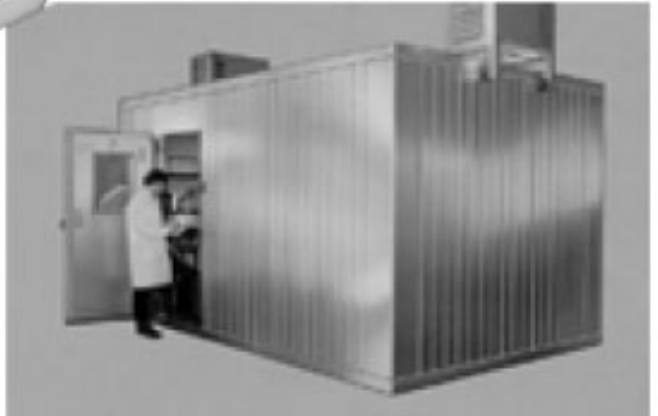
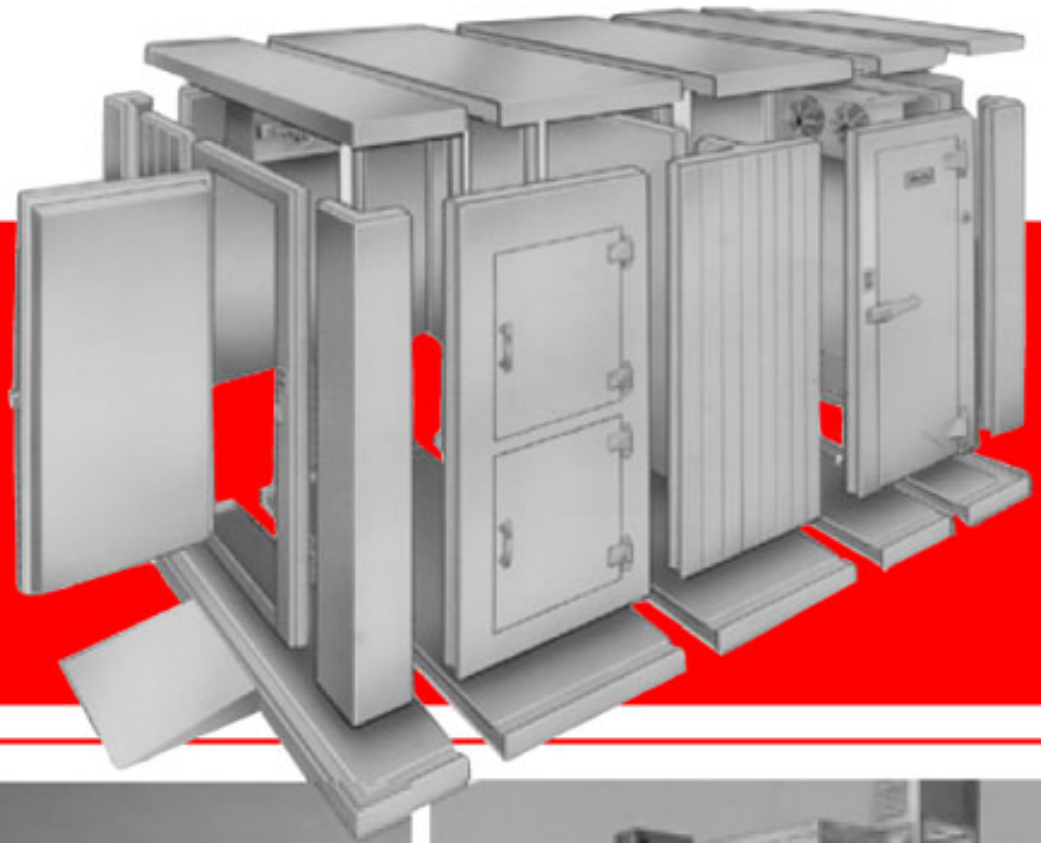


# Walk-In Coolers, Freezers, Refrigerated Warehouses and Distribution Centers

From **BMIL** *International, Inc.*



Refrigerated Products-  
Proven Dependable



BALLY™ Pre-Engineered, Pre-Fabricated walk-in coolers, freezers and refrigerated warehouses from BMIL INTERNATIONAL, INC. offer the most cost effective and reliable structures of their kind in today's market. This brochure depicts some of the construction details and features that make the BALLY/BMIL difference.

While the BALLY™ product excels in its intended use, it is only part of the story. BMIL INTERNATIONAL, Inc.'s leadership has developed with superior BALLY™ products as a core and with the addition of world-renowned products to present a value-oriented package.

We back our products with over 45 years of knowledge in the cold storage industry. Our customers receive superior engineering support from an established team of experts. An investment in a BALLY™ structure is protected by a BALLY™ 10-year warranty on panels, but more importantly, by over 45 years as the premier manufacturer of pre-engineered, pre-fabricated panels in the world.

Today, we are responding quickly to the requirements of our clients with state-of-the-art computerized manufacturing equipment and tools to provide a "concept to completion approach".



Shandong Peanut Warehouse, Shandong, PRC  
28 x 85 x 5 m. 8 compartment



Hipac/Hanshell Inniss Bridgetown, Barbados  
Food Processing/ Cold Storage  
Frozen Food Storage -25°C



## PANEL CONSTRUCTION

BALLY™ panels are poured-in-place polyurethane foam, which are clad with a variety of metal finishes. Inch for inch, BALLY™ polyurethane has more than twice the insulating efficiency of fiberglass or polystyrene and more importantly is superior to foamed-in-placed polyurethane panels.

Interior skins are available in stucco embossed aluminum, stucco galvalume®, stainless steel, and smooth white polyester over galvanized steel, as well as our standard white polyester over stucco galvanized steel. Exterior skins are available in all of these finishes with stucco white profile panels especially suited for refrigerated warehouses.

BALLY™ superior poured-in-place polyurethane panels are available in 4", 5", and 6" thickness' (102, 127, 152 mm) and heights up to 28'0" (8.53m), offering excellent insulating values. Panels are listed by UL as well as Factory Mutual and currently meet all worldwide criteria for CFC reduction. Poured-in-place polyurethane foam bonds tenaciously to the interior of treated metal skins, which provides for a panel made of 100% insulation, which is both light in weight and exceptionally strong. BALLY'S foam system has been tested in accordance with A.S.T.M. test No. E-84-84 and is a Class I material with flame and smoke spread less than 25/450.

BALLY™ tongues and grooves on panel edges are precisely formed in manufacturing fixtures assuring an extremely tight and sanitary joint complete with vinyl gasket material, eliminating the need for caulking, batten strips, or other fastening means.

BALLY™ Speed-Lok® joining mechanisms, manufactured by BALLY™, facilitates the secure, accurate, and fast joining (and when necessary disassembly) of panels.

When BALLY™ panels are assembled, all panels including vertical to vertical, ceiling to ceiling, and ceiling to verticals, are interconnected with BALLY™ Speed-Lok® mechanisms. This assembly, with integral 2" wide steel straps, forms perimeters of steel that hold panels securely and reliably together making extensive use of the BALLY™ **diaphragmatic panel action**.

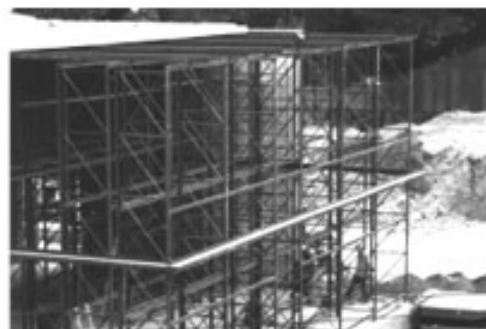
## SIMPLE ASSEMBLY

BALLY™ pre-engineered, pre-fabricated panels from BMIL are made for fast and easy installation, and when necessary, disassembly and reassembly. Lightweight panels are joined and locked together with BALLY™ Speed-Lok® mechanisms.

1. Floor panels (when desired or required) are placed into position and leveled. Floor panels are Speed-Loked together.
2. Wall assembly is started by speed-locking a corner and wall panel together.
3. Wall assembly is completed.
4. Ceiling assembly is started by speed-locking a ceiling end panel to sidewalls.
5. Balance of ceiling panels are completed.



Consortio Fruticola Mexicano Manzanillo, Mexico 34 x 15 x 6m high  
• 2 compartment Grape Storage +2°C



Unilever S.A., San Salvador, El Salvador  
350 Pallet, Outdoor Rack Supported  
Ice Cream Storage/ Distribution -28°C



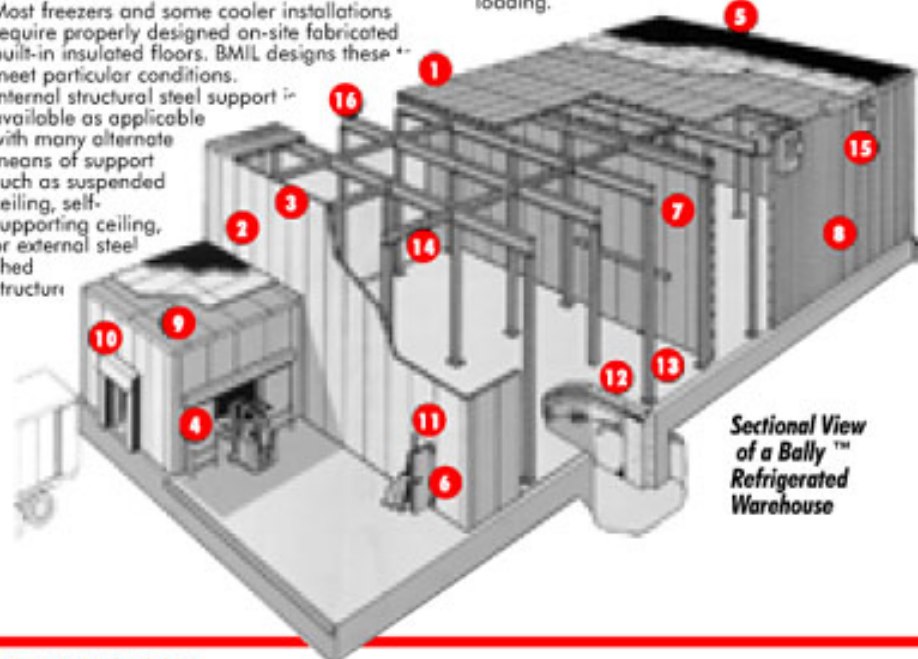
Robinson Club, Hurgada, Egypt  
Pastry Cooler, Main Kitchen

## TYPICAL CONSTRUCTION FEATURES OF A BALLY™ REFRIGERATED WAREHOUSE AS DESIGNED BY BMIL INTERNATIONAL, INC.

1. BALLY™ utilizes standard size pre engineered pre-fabricated insulated panel sections.
2. BALLY™ panels are available in a wide variety of interior/exterior metal skins. (Please refer to page 2).
3. BALLY™ superior poured-in-place polyurethane insulation is available in 4", 5", 6" thickness (102, 127, 152 mm).
4. Industrial cold storage doors are available in manual or power operation as single or double horizontal slide, vertical rise, sectional overhead, and infitting.
5. PVC or EPDM membrane roofs supplied by BMIL are complete with gutters, downspouts and necessary detailed installation drawings.
6. BALLY™ hinged entrance doors are available in various sizes to suit an installation, and are complete with available panic hardware.
7. Partition wall panels, identical to exterior panels, may be attached to verticals or ceiling panels by speed-loks® or use of available metal trim.
8. Exterior panels are available in architectural profile, typically USDA approved white polyester over stucco galvanized steel and up to 28'0" (8.53m) in a single tier. (Stacked verticals also available for higher applications).
9. Ante-rooms, loading docks, or vestibules, when required, are assembled using standard BALLY™ panels which can be attached to the main structure utilizing superior locking pin rails or alternatively with metal trim.

10. Dock seals, shelters, and additional accessories such as dock lights and dock levelers are available to suit a particular application.
11. Doors complete with ante-condensate heaters are available to suit a particular application to prevent condensation and frost formation.
12. Most freezers and some cooler installations require properly designed on-site fabricated built-in insulated floors. BMIL designs these to meet particular conditions.
13. Internal structural steel support is available as applicable with many alternate means of support such as suspended ceiling, self-supporting ceiling, or external steel shed structure.

14. Lateral steel bracing is designed and utilized as required.
15. BALLY™ refrigeration systems are designed by BMIL to suit a specific application and to provide cost effective means of temperature and humidity control.
16. Proper steel support varies with an individual warehouse and will suit local site conditions, construction regulations, and applicable wind, seismic, and snow loading.



Sectional View of a Bally™ Refrigerated Warehouse

## BALLY™ REFRIGERATION SYSTEMS FOR WALK-IN COOLERS, FREEZERS, POWER BLAST® AIR BLAST FREEZERS, AND REFRIGERATED WAREHOUSES

BALLY™ refrigeration systems are properly selected and designed by BMIL INTERNATIONAL, INC. to suit specific temperature and humidity conditions. BALLY™ refrigeration systems are extremely energy efficient and available as THERMOBALANCE™, THERMOWELD™, and THERMOSEVER™ (hot gas defrost) as well as multiple indoor compressor systems with remote air-cooled condensers. These systems satisfy all of the critical requirements of the BALLY™ insulated envelope.

BALLY™ refrigeration systems are extremely easy to install with available pre-assembled remote components and economical to operate. Refrigeration systems are designed to minimize down time during the life of the unit. All individual system components are of the highest quality and

selected from the world's leading manufacturers of refrigeration system components. There are virtually hundreds of different configurations that are available including high, medium, and low temperature configurations utilizing single stage hermetic or semi-hermetic compressors and when necessary internally compounded two-stage compressors for applications requiring temperatures of -40°F (-40°C) and below. BMIL and BALLY™ offer a complete line of evaporators, air-cooled condensers, packaged outdoor air-cooled condensing units indoor compressor/receiver units, and other products to attend to the whole spectrum of refrigeration needs. Write to us, call us, or e-mail us your specific requirements so that we can provide you with the BALLY™ refrigeration system to meet your needs. Visitors are welcome to browse our web-site at [www.bmil.com](http://www.bmil.com).



Medium Profile  
BB Evaporators



Packaged  
outdoor air cooled  
condensing units 1/2 - 30 HP



Multi-fan Air-  
Cooled Condenser  
550 - 850- 1140 RPM

# JAMISON INDUSTRIAL COLD STORAGE DOORS

The quality and reliability of the cold storage door is as important, if not more important, than the insulated enclosure. It is for this reason that BMIL INTERNATIONAL, INC. choose to represent JAMISON, the world's recognized leader, since 1906, of cold storage doors in the industry. BMIL INTERNATIONAL, INC. represents JAMISON products worldwide, which offers the greatest degree of quality and reliability whether on a BALLY™ pre-engineered, pre-fabricated insulated enclosure or insulated enclosures as manufactured by others. Ensuring that one of the only moving parts of an insulated refrigerated enclosure represents Jamison quality, is a truly wise investment.

JAMISON Doors offer the following important features and advantages:

- Reduce your refrigeration costs, and dangerous conditions such as ice and condensation caused by the infiltration of hot humid air, with Jamison's Diamond-Trac® Roller system with "down-and-in" motion.
- Powertron® electro mechanical doors offer high-speed operation permitting the entrance and exit of products rapidly and efficiently reducing the time where infiltration can occur.
- JAMISON "DS" Powertron® operator with 5-year guarantee is considered the most reliable in the industry. The electric all-gear drive operator has been tested through 2 million opening and closing cycles. Typical doors open at 80" per second bi-parting, 40" per second single slide.
- JAMISON utilizes heavy-duty components suitable for high-speed industrial use and offering extremely low maintenance.

JAMISON offers a complete line of cold storage doors. JAMISON doors are utilized extensively in new installations, or for replacement of existing doors in existing facilities. Please consult with BMIL INTERNATIONAL, INC. or visit our website at [www.bmil.com](http://www.bmil.com) for advice in selecting a new door or selecting a replacement door, which will be most appropriate for your needs and the doors intended use.



## JAMISON



### JUST A SELECT FEW OF HUNDREDS OF PROJECTS SUCCESSFULLY COMPLETED WORLDWIDE

- Conrad Hotel — Cairo Egypt
- Desert Beach Hotel — Hurghada, Egypt
- Sheraton Hotel — Soma Bay, Egypt
- Atlantic Cold Store — Tema, Ghana
- Conafic Ltd. — Tema, Ghana
- Gateway Coldstorage — Accra, Ghana
- Nyame Yie — Tema, Ghana
- Grand Serrail — Beirut, Lebanon
- Hemaq Ghina & Sons — Mauritius
- King's Food — Port Louis, Mauritius
- Chevron Banana Base Oil Exploration Facility — Zaire
- ICRISAT Seed Storage Facility — Zimbabwe
- Conrad Hilton International — Hong Kong
- Dairy Farm Ice — Hong Kong
- Airport Catering Facility — New Delhi, India
- Kodak — Delhi, Cuttack, Poona, India
- Taj Hotel — India
- Hyatt Regency Hotel — Bandung, Indonesia

- Alto Vista Hotel — Philippines
- Proctor & Gamble — Philippines
- Inter-Continental Hotel — Colombo, Sri Lanka
- Stassen Import/Export — Colombo, Sri Lanka
- Evergreen Catering Facilities — Taiwan
- Grand Hotel Flight Kitchen — Taiwan
- Catara Fisheries — Vietnam
- Equatorial Yangon Hotel — Yangon
- Dunkley's Dairy — Devonshire, Bermuda
- Borda Azul — Costa Rica
- Fructo CR, S.A. — Alajuela, Costa Rica
- Del Tropic Foods — San Salvador, El Salvador
- Industrias Unisola — El Salvador
- Marriott Hotel Presidente — San Salvador, El Salvador
- Foremost Dairies — Guatemala
- DIDCO — Georgetown, Guyana
- Bachoco — Mexico
- Chilchota Alimentos — Gomez Palacio, Mexico

- Moquilodora Patelera, S.A. de C.V. — Oaxaca, Mexico
- Nestle — Mexico, D.F.
- OXXO — Guadalajara, Mexico
- Bonloc — Panama
- Unilever — Panama
- Avipac Inc. — Puerto Vaccamonte, Panama
- Nestle Panama — Panama City, Panama
- New Zealand Milk Products — Lima, Peru
- Reykjavik Research Institute — Reykjavik, Iceland
- Beskin Robbins — Moscow, Russia
- Ben & Jerry's — Moscow, Russia
- Ministry of Health — Oman
- Unilever — Pakistan
- Conrad Hilton International — Istanbul, Turkey
- Guam United Warehouse — Guam
- Warner Lambert — Puerto Rico
- Hunter Foods — St. Thomas, USVI
- St. Croix Dairy — St. Croix, USVI

