

# BEZ-Line Condensing Units

## PRODUCT DATA & SPECIFICATIONS

Bulletin B40-BEZ-PDS-60-1

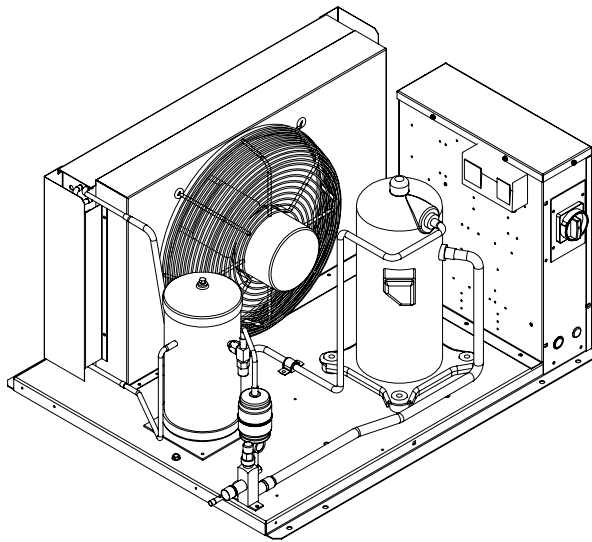
1079410

**60**  
Hz

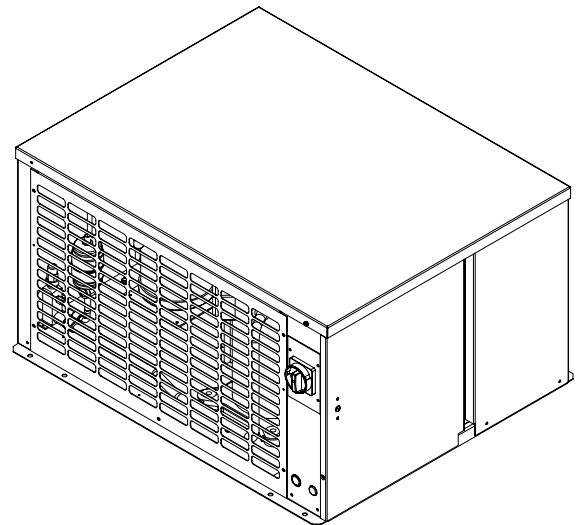
Indoor/Outdoor  
Air-Cooled Scroll  
Condensing Units

**NEW**

2 to 10 HP -  
High, Medium and Low  
Temperature Refrigeration



Indoor Unit

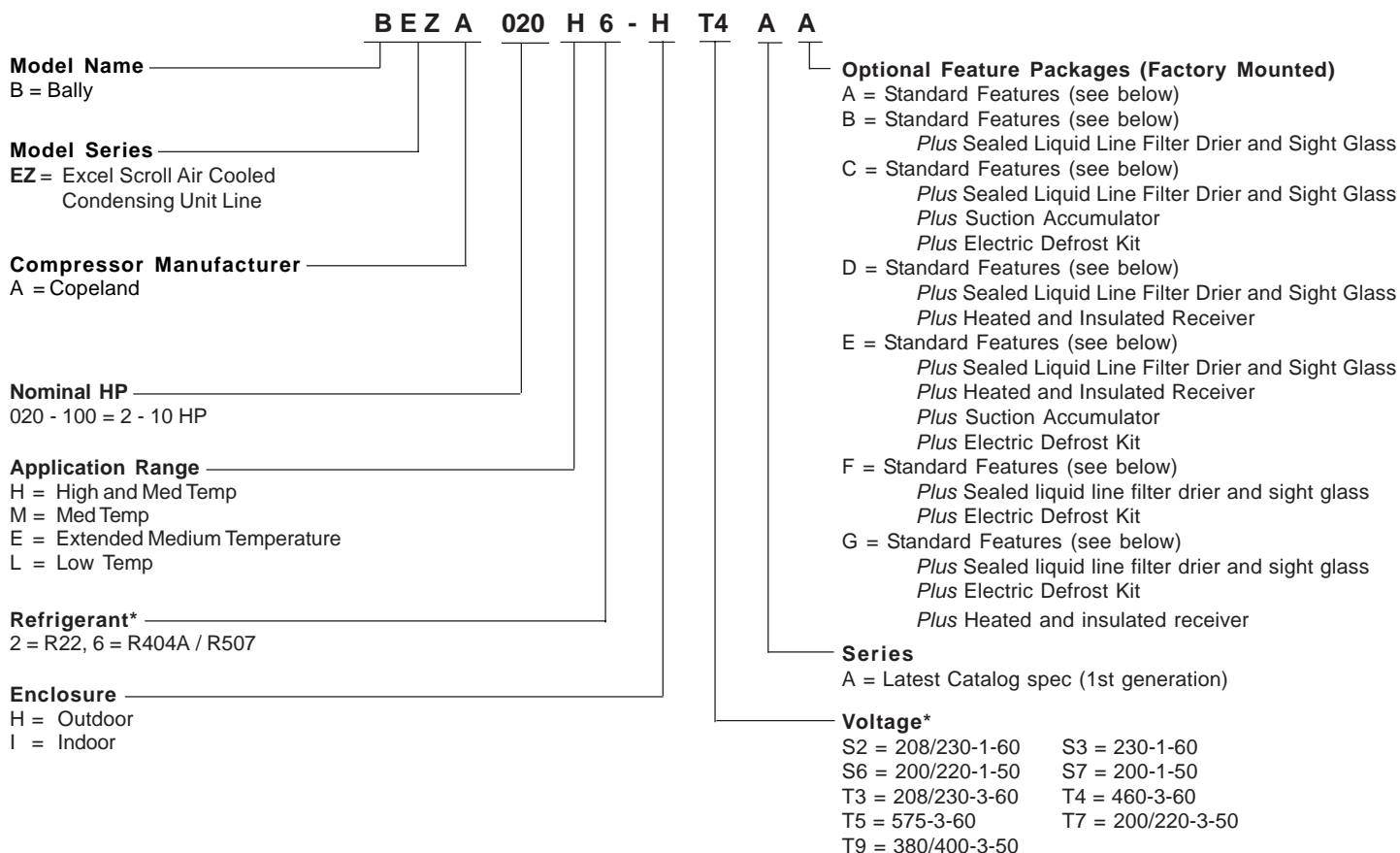


Outdoor Unit

## CONTENTS

	<b>Page</b>
Nomenclature.....	2
Features.....	2 - 3
Capacity Data (Imperial and <i>Metric</i> ).....	4 - 8
Electrical Data.....	9 - 10
Dimensional Data.....	11 - 12
Specifications.....	13
Wiring Diagrams.....	14 - 16

# NOMENCLATURE



\* subject to compressor availability

## STANDARD FEATURES

### **Indoor Unit:**

- Weatherproof electrical control box with compressor contactor and fused control circuit
- Welded hermetic scroll compressor
- High efficiency enhanced tube and fin condenser design
- Energy efficient PSC condenser fan motor
- Receiver with fusible plug and liquid shut off valve
- Adjustable dual high / low pressure control
- Suction service valve
- Pre-formed copper tubing
- Liquid injection (low temp. models)
- Unit leak tested and shipped with Helium holding charge

### **Outdoor Unit: All Standard Features of Indoor Unit, Plus:**

- Outdoor weather-resistant housing with removable hood
- Flooded head pressure control (non adjustable)
- Crankcase heater

## OPTIONAL FEATURE PACKAGES (Factory Mounted)

### Package A:

- Standard Features (see pg. 2)

### Package B:

- Standard Features (see pg. 2)
- *Plus* Sealed Liquid Line Filter Drier & Sight Glass

### Package C:

- Standard Features (see pg. 2)
- *Plus* Sealed Liquid Line Filter Drier & Sight Glass
- *Plus* Suction Accumulator
- *Plus* Electric Defrost Kit

### Package D:

- Standard Features (see pg. 2)
- *Plus* Sealed Liquid Line Filter Drier & Sight Glass
- *Plus* Heated and Insulated Receiver

### Package E:

- Standard Features (see pg. 2)
- *Plus* Sealed Liquid Line Filter Drier & Sight Glass
- *Plus* Heated and Insulated Receiver
- *Plus* Suction Accumulator
- *Plus* Electric Defrost Kit

### Package F:

- Standard Features (see pg. 2)
- *Plus* Sealed liquid line filter drier and sight glass
- *Plus* Electric Defrost Kit

### Package G:

- Standard Features (see pg. 2)
- *Plus* Sealed liquid line filter drier and sight glass
- *Plus* Electric Defrost Kit
- *Plus* Heated and insulated receiver

## OPTIONAL FEATURES (Factory Mounted)

- Suction accumulator
- Suction accumulator with boil-out coil
- Discharge line Check valve
- Oil separator
- Oil separator c/w oil return filter & solenoid valve
- Adjustable head pressure control valves
- Receiver inlet ball valve
- Heated and Insulated receiver
- Over-sized receiver
- Sealed liquid line filter drier & sight-glass
- Ball valve - liquid line (shipped loose)
- Insulated suction lines
- Leg Kits
- Discharge air hood
- Sub cooling circuit on 5 and 7.5 HP models
- Flex hoses - for all pressure controls (Dual Pressure, Oil switch, etc..)
- Liquid line solenoid valve-(with standard 230 volt coil)-shipped loose
- Compressor Circuit breaker
- Current sensing relay - for use with Oil safety control (where applicable)
- Defrost heater contactor c/w fuse block
- Evaporator Fan contactor c/w fuse block
- Disconnect switch
- Disconnect Fusing
- Pump down toggle switch
- Lock out control circuit -Liquid solenoid valve with separate HP and LP controls
- Hoffmann Speed control for condenser fan (replaces flooded valve)
- Time delay relay for compressor
- Mechanical Time Clock -Paragon 8145
- Electronic Time Clock
- Electronic Defrost Kit
- Electronic Voltage/Phase Monitor

CONDENSING UNIT MODEL	SATURATED SUCTION TEMPERATURE		AMBIENT TEMPERATURE ° F ( ° C)													
			° F	° C	80	(26.6)	85	(29.4)	90	(32.2)	95	(35)	100	(37.8)	105	(40.6)
	<b>BEZA020H2</b> Compressor Model ZB15KCE	45 40 35 30 25 20 15	(7.2) (4.4) (1.7) (-1.1) (-3.9) (-6.7) (-9.4)	28100 25900 23800 21700 19800 18000 16300	(2222) (2011) (1811) (1627) (1454) (1295) (1146)	27400 25200 23100 21200 19300 17500 15800	(2137) (1934) (1741) (1565) (1395) (1240) (1099)	26600 24500 22500 20600 18800 17000 15400	(2055) (1858) (1674) (1501) (1339) (1190) (1052)	25900 23800 21900 20000 18200 16500 14900	(1975) (1785) (1606) (1439) (1287) (1140) (1011)	25100 23100 21200 19400 17700 16000 N/A	(1896) (1712) (1539) (1380) (1231) (1093) N/A	24300 22400 20500 18800 17100 N/A N/A	(1817) (1641) (1477) (1322) (1178) N/A N/A	23500 21600 19800 18100 N/A N/A N/A
<b>BEZA025H2</b> Compressor Model ZB19KCE	45 40 35 30 25 20 15	(7.2) (4.4) (1.7) (-1.1) (-3.9) (-6.7) (-9.4)	32200 29500 27000 24700 22500 20400 18400	(2222) (2011) (1811) (1627) (1454) (1295) (1146)	31400 28800 26300 24100 21900 19900 18000	(2137) (1934) (1741) (1565) (1395) (1240) (1099)	30500 28000 25600 23400 21300 19400 17500	(2055) (1858) (1674) (1501) (1339) (1190) (1052)	29700 27200 24900 22700 20700 18800 17000	(1975) (1785) (1606) (1439) (1287) (1140) (1011)	28800 26400 24200 22100 20100 18200 N/A	(1896) (1712) (1539) (1380) (1231) (1093) N/A	27900 25500 23400 21300 19400 N/A N/A	(1817) (1641) (1477) (1322) (1178) N/A N/A	26900 24700 22600 20600 N/A N/A N/A	(1738) (1571) (1410) (1263) N/A N/A N/A
<b>BEZA030H2</b> Compressor Model ZB21KCE	45 40 35 30 25 20 15	(7.2) (4.4) (1.7) (-1.1) (-3.9) (-6.7) (-9.4)	42500 39100 35800 32700 29700 26900 24300	(2222) (2011) (1811) (1627) (1454) (1295) (1146)	41500 38100 34900 31900 29000 26200 23700	(2137) (1934) (1741) (1565) (1395) (1240) (1099)	40500 37200 34000 31000 28200 25500 23000	(2055) (1858) (1674) (1501) (1339) (1190) (1052)	39400 36200 33100 30200 27400 24800 22400	(1975) (1785) (1606) (1439) (1287) (1140) (1011)	38300 35100 32200 29300 26600 24100 N/A	(1896) (1712) (1539) (1380) (1231) (1093) N/A	37200 34100 31200 28400 25800 N/A N/A	(1817) (1641) (1477) (1322) (1178) N/A N/A	36000 33000 30200 27500 N/A N/A N/A	(1738) (1571) (1410) (1263) N/A N/A N/A
<b>BEZA035H2</b> Compressor Model ZB26KC	45 40 35 30 25 20 15	(7.2) (4.4) (1.7) (-1.1) (-3.9) (-6.7) (-9.4)	48400 44500 40800 37300 34000 30800 27900	(2222) (2011) (1811) (1627) (1454) (1295) (1146)	47200 43300 39700 36300 33100 30000 27100	(2137) (1934) (1741) (1565) (1395) (1240) (1099)	45900 42200 38700 35400 32200 29200 26400	(2055) (1858) (1674) (1501) (1339) (1190) (1052)	44700 41000 37600 34400 31300 28400 25600	(1975) (1785) (1606) (1439) (1287) (1140) (1011)	43300 39800 36500 33400 30400 27600 N/A	(1896) (1712) (1539) (1380) (1231) (1093) N/A	42000 38600 35400 32300 29400 N/A N/A	(1817) (1641) (1477) (1322) (1178) N/A N/A	40600 37300 34200 31300 N/A N/A N/A	(1738) (1571) (1410) (1263) N/A N/A N/A
<b>BEZA040H2</b> Compressor Model ZB30KCE	45 40 35 30 25 20 15	(7.2) (4.4) (1.7) (-1.1) (-3.9) (-6.7) (-9.4)	55600 51200 47000 43000 39200 35500 32100	(2222) (2011) (1811) (1627) (1454) (1295) (1146)	54100 49800 45700 41800 38100 34600 31300	(2137) (1934) (1741) (1565) (1395) (1240) (1099)	52700 48500 44500 40700 37100 33600 30400	(2055) (1858) (1674) (1501) (1339) (1190) (1052)	51200 47100 43200 39500 36000 32700 29500	(1975) (1785) (1606) (1439) (1287) (1140) (1011)	49700 45700 41900 38300 34900 31700 N/A	(1896) (1712) (1539) (1380) (1231) (1093) N/A	48100 44300 40600 37100 33800 N/A N/A	(1817) (1641) (1477) (1322) (1178) N/A N/A	46500 42800 39200 35900 N/A N/A N/A	(1738) (1571) (1410) (1263) N/A N/A N/A
<b>BEZA050H2</b> Compressor Model ZB38KCE	45 40 35 30 25 20 15	(7.2) (4.4) (1.7) (-1.1) (-3.9) (-6.7) (-9.4)	68600 63200 58000 53000 48300 43900 39600	(2222) (2011) (1811) (1627) (1454) (1295) (1146)	66900 61600 56500 51700 47100 42700 38600	(2137) (1934) (1741) (1565) (1395) (1240) (1099)	65100 59900 55000 50200 45800 41500 37500	(2055) (1858) (1674) (1501) (1339) (1190) (1052)	63300 58200 53400 48800 44400 40300 36400	(1975) (1785) (1606) (1439) (1287) (1140) (1011)	61400 56500 51800 47300 43100 39100 N/A	(1896) (1712) (1539) (1380) (1231) (1093) N/A	59500 54700 50200 45800 41700 N/A N/A	(1817) (1641) (1477) (1322) (1178) N/A N/A	57500 52900 48500 44300 N/A N/A N/A	(1738) (1571) (1410) (1263) N/A N/A N/A
<b>BEZA060H2</b> Compressor Model ZB45KCE	45 40 35 30 25 20 15	(7.2) (4.4) (1.7) (-1.1) (-3.9) (-6.7) (-9.4)	83700 76900 70500 64400 58600 53200 48200	(2222) (2011) (1811) (1627) (1454) (1295) (1146)	81600 75000 68700 62800 57100 51800 46900	(2137) (1934) (1741) (1565) (1395) (1240) (1099)	79500 73000 66900 61100 55500 50400 45500	(2055) (1858) (1674) (1501) (1339) (1190) (1052)	77300 71000 65000 59300 53900 48900 44200	(1975) (1785) (1606) (1439) (1287) (1140) (1011)	75000 68900 63000 57500 52300 47300 N/A	(1896) (1712) (1539) (1380) (1231) (1093) N/A	72700 66700 61000 55600 50500 N/A N/A	(1817) (1641) (1477) (1322) (1178) N/A N/A	70300 64500 58900 53700 N/A N/A N/A	(1738) (1571) (1410) (1263) N/A N/A N/A
<b>BEZA075H2</b> Compressor Model ZB56KCE	45 40 35 30 25 20 15	(7.2) (4.4) (1.7) (-1.1) (-3.9) (-6.7) (-9.4)	97000 89200 81800 74800 68300 62100 56400	(2222) (2011) (1811) (1627) (1454) (1295) (1146)	94400 86800 79600 72800 66400 60400 54800	(2137) (1934) (1741) (1565) (1395) (1240) (1099)	91700 84300 77300 70700 64500 58700 53300	(2055) (1858) (1674) (1501) (1339) (1190) (1052)	88900 81700 75000 68600 62600 57000 51700	(1975) (1785) (1606) (1439) (1287) (1140) (1011)	86100 79100 72600 66400 60600 55200 N/A	(1896) (1712) (1539) (1380) (1231) (1093) N/A	83200 76500 70100 64200 58600 N/A N/A	(1817) (1641) (1477) (1322) (1178) N/A N/A	80200 73700 67600 61800 N/A N/A N/A	(1738) (1571) (1410) (1263) N/A N/A N/A

--- Outside Operating Range

CONDENSING UNIT MODEL	SATURATED SUCTION TEMPERATURE		AMBIENT TEMPERATURE °F (°C)													
	°F	°C	80	(26.6)	85	(29.4)	90	(32.2)	95	(35)	100	(37.8)	105	(40.6)	110	(43.3)
	<b>BEZA020M6</b> Compressor Model ZB15KCE															
35	(1.7)	24300	(7122)	23400	(6858)	22400	(6565)	21400	(6272)	20300	(5950)	19300	(5657)	18200	(5334)	
30	(-1.1)	22500	(6594)	21600	(6331)	20600	(6038)	19700	(5774)	18800	(5510)	17800	(5217)	16800	(4924)	
25	(-3.9)	20700	(6067)	19800	(5803)	19000	(5569)	18200	(5334)	17300	(5070)	16400	(4807)	15500	(4543)	
20	(-6.7)	19000	(5569)	18200	(5334)	17400	(5100)	16700	(4894)	15900	(4660)	15000	(4396)	14200	(4162)	
15	(-9.4)	17300	(5070)	16700	(4894)	15900	(4660)	15200	(4455)	14500	(4250)	13700	(4015)	13000	(3810)	
10	(-12.2)	15800	(4631)	15200	(4455)	14500	(4250)	13900	(4074)	13200	(3869)	12500	(3664)	11800	(3458)	
5	(-15.0)	14300	(4191)	13800	(4045)	13200	(3869)	12600	(3693)	12000	(3517)	11400	(3341)	10700	(3136)	
0	(-17.8)	13000	(3810)	12500	(3664)	11900	(3488)	11400	(3341)	10800	(3165)	10300	(3019)	9700	(2843)	
-5	(-20.6)	11700	(3429)	11200	(3283)	10800	(3165)	10300	(3019)	9800	(2872)	9300	(2726)	8700	(2550)	
-10	(-23.3)	10500	(3077)	10100	(2960)	9600	(2814)	9200	(2696)	8800	(2579)	8300	(2433)	7800	(2286)	
<b>BEZA025M6</b> Compressor Model ZB19KCE																
35	(1.7)	30400	(8910)	29100	(8529)	27900	(8177)	26700	(7825)	25400	(7444)	24100	(7063)	22800	(6682)	
30	(-1.1)	28000	(8206)	26900	(7884)	25800	(7562)	24600	(7210)	23400	(6858)	22200	(6506)	21000	(6155)	
25	(-3.9)	25800	(7562)	24800	(7268)	23700	(6946)	22700	(6653)	21600	(6331)	20500	(6008)	19300	(5657)	
20	(-6.7)	23700	(6946)	22700	(6653)	21800	(6389)	20800	(6096)	19800	(5803)	18800	(5510)	17700	(5188)	
15	(-9.4)	21600	(6331)	20800	(6096)	19900	(5832)	19000	(5569)	18100	(5305)	17200	(5041)	16200	(4748)	
10	(-12.2)	19700	(5774)	18900	(5539)	18100	(5305)	17300	(5070)	16500	(4836)	15600	(4572)	14800	(4338)	
5	(-15.0)	17900	(5246)	17200	(5041)	16500	(4836)	15700	(4601)	15000	(4396)	14200	(4162)	13400	(3927)	
0	(-17.8)	16200	(4748)	15600	(4572)	14900	(4367)	14200	(4162)	13500	(3957)	12800	(3751)	12100	(3546)	
-5	(-20.6)	14600	(4279)	14000	(4103)	13400	(3927)	12800	(3751)	12200	(3576)	11600	(3400)	10900	(3195)	
-10	(-23.3)	13100	(3839)	12600	(3693)	12000	(3517)	11500	(3370)	10900	(3195)	10300	(3019)	9700	(2843)	
<b>BEZA030M6</b> Compressor Model ZB21KCE																
35	(1.7)	38100	(11166)	36600	(10727)	35100	(10287)	33600	(9848)	32100	(9408)	30600	(8968)	29000	(8499)	
30	(-1.1)	35000	(10258)	33700	(9877)	32300	(9467)	30900	(9056)	29500	(8646)	28100	(8236)	26700	(7825)	
25	(-3.9)	32100	(9408)	30900	(9056)	29700	(8705)	28400	(8324)	27100	(7943)	25800	(7562)	24400	(7151)	
20	(-6.7)	29400	(8617)	28300	(8294)	27100	(7943)	26000	(7620)	24800	(7268)	23600	(6917)	22300	(6536)	
15	(-9.4)	26800	(7855)	25800	(7562)	24700	(7239)	23700	(6946)	22600	(6624)	21500	(6301)	20400	(5979)	
10	(-12.2)	24300	(7122)	23400	(6858)	22500	(6594)	21500	(6301)	20500	(6008)	19500	(5715)	18500	(5422)	
5	(-15.0)	22000	(6448)	21200	(6213)	20400	(5979)	19500	(5715)	18600	(5451)	17700	(5188)	16700	(4894)	
0	(-17.8)	19900	(5832)	19100	(5598)	18400	(5393)	17600	(5158)	16800	(4924)	15900	(4660)	15100	(4426)	
-5	(-20.6)	17900	(5246)	17200	(5041)	16500	(4836)	15800	(4631)	15100	(4426)	14300	(4191)	13500	(3957)	
-10	(-23.3)	16000	(4689)	15400	(4513)	14800	(4338)	14100	(4132)	13500	(3957)	12800	(3751)	12100	(3546)	
<b>BEZA035M6</b> Compressor Model ZB26KCE																
35	(1.7)	43500	(12749)	41800	(12251)	40100	(11753)	38300	(11225)	36500	(10698)	34700	(10170)	32900	(9642)	
30	(-1.1)	40100	(11753)	38500	(11284)	36900	(10815)	35300	(10346)	33700	(9877)	32000	(9379)	30300	(8880)	
25	(-3.9)	36800	(10785)	35400	(10375)	33900	(9936)	32500	(9525)	30900	(9056)	29400	(8617)	27800	(8148)	
20	(-6.7)	33700	(9877)	32400	(9496)	31100	(9115)	29700	(8705)	28300	(8294)	26900	(7884)	25500	(7474)	
15	(-9.4)	30800	(9027)	29600	(8675)	28400	(8324)	27200	(7972)	25900	(7591)	24600	(7210)	23200	(6800)	
10	(-12.2)	28000	(8206)	27000	(7913)	25800	(7562)	24700	(7239)	23600	(6917)	22400	(6565)	21100	(6184)	
5	(-15.0)	25400	(7444)	24400	(7151)	23400	(6858)	22400	(6565)	21400	(6272)	20300	(5950)	19200	(5627)	
0	(-17.8)	23000	(6741)	22100	(6477)	21200	(6213)	20200	(5920)	19300	(5657)	18300	(5363)	17300	(5070)	
-5	(-20.6)	20700	(6067)	19900	(5832)	19100	(5598)	18200	(5334)	17400	(5100)	16500	(4836)	15500	(4543)	
-10	(-23.3)	18500	(5422)	17800	(5217)	17100	(5012)	16300	(4777)	15500	(4543)	14700	(4308)	13900	(4074)	
<b>BEZA040M6</b> Compressor Model ZB30KCE																
35	(1.7)	48800	(14302)	46900	(13746)	44800	(13130)	42800	(12544)	40700	(11928)	38600	(11313)	36400	(10668)	
30	(-1.1)	45000	(13189)	43200	(12661)	41400	(12134)	39500	(11577)	37600	(11020)	35600	(10434)	33600	(9848)	
25	(-3.9)	41400	(12134)	39700	(11635)	38000	(11137)	36300	(10639)	34500	(10111)	32700	(9584)	30900	(9056)	
20	(-6.7)	37900	(11108)	36400	(10668)	34800	(10199)	33200	(9730)	31600	(9261)	29900	(8763)	28200	(8265)	
15	(-9.4)	34600	(10141)	33200	(9730)	31700	(9291)	30300	(8880)	28800	(8441)	27300	(8001)	25700	(7532)	
10	(-12.2)	31400	(9203)	30100	(8822)	28800	(8441)	27500	(8060)	26100	(7649)	24700	(7239)	23300	(6829)	
5	(-15.0)	28400	(8324)	27200	(7972)	26000	(7620)	24800	(7268)	23600	(6917)	22300	(6536)	21000	(6155)	
0	(-17.8)	25500	(7474)	24500	(7181)	23400	(6858)	22300	(6536)	21100	(6184)	20000	(5862)	18800	(5510)	
-5	(-20.6)	22800	(6682)	21900	(6419)	20900	(6125)	19900	(5832)	18800	(5510)	17700	(5188)	16600	(4865)	
-10	(-23.3)	20300	(5950)	19400	(5686)	18500	(5422)	17600	(5158)	16600	(4865)	15600	(4572)	14600	(4279)	

--- Outside Operating Range

### CAPACITY BTU/H (WATTS)

CONDENSING UNIT MODEL	SATURATED SUCTION TEMPERATURE		AMBIENT TEMPERATURE ° F ( ° C)							
			80 (26.6)	85 (29.4)	90 (32.2)	95 (35)	100 (37.8)	105 (40.6)	110 (43.3)	
	° F	° C								
BEZA050M6 Compressor Model ZB38KCE	35	(1.7)	60800 (17819)	58300 (17087)	55900 (16383)	53400 (15651)	50900 (14918)	48300 (14156)	45700 (13394)	
	30	(-1.1)	56100 (16442)	53800 (15768)	51600 (15123)	49300 (14449)	47000 (13775)	44600 (13072)	42200 (12368)	
	25	(-3.9)	51600 (15123)	49500 (14508)	47500 (13921)	45400 (13306)	43200 (12661)	41000 (12016)	38800 (11372)	
	20	(-6.7)	47300 (13863)	45400 (13306)	43500 (12749)	41600 (12192)	39600 (11606)	37600 (11020)	35500 (10404)	
	15	(-9.4)	43200 (12661)	41500 (12163)	39800 (11665)	38000 (11137)	36200 (10610)	34400 (10082)	32500 (9525)	
	10	(-12.2)	39400 (11547)	37900 (11108)	36300 (10639)	34700 (10170)	33000 (9672)	31300 (9174)	29600 (8675)	
	5	(-15.0)	35800 (10492)	34400 (10082)	32900 (9642)	31500 (9232)	30000 (8792)	28400 (8324)	26800 (7855)	
	0	(-17.8)	32300 (9467)	31100 (9115)	29800 (8734)	28500 (8353)	27100 (7943)	25700 (7532)	24200 (7093)	
	-5	(-20.6)	29100 (8529)	28000 (8206)	26800 (7855)	25600 (7503)	24400 (7151)	23100 (6770)	21800 (6389)	
-10	(-23.3)	26100 (7649)	25100 (7356)	24100 (7063)	23000 (6741)	21900 (6419)	20700 (6067)	19500 (5715)		
BEZA060M6 Compressor Model ZB45KCE	35	(1.7)	74000 (21688)	71100 (20838)	68200 (19988)	65200 (19109)	62200 (18230)	59200 (17351)	56100 (16442)	
	30	(-1.1)	68100 (19959)	65500 (19197)	62800 (18406)	60100 (17614)	57300 (16794)	54500 (15973)	51600 (15123)	
	25	(-3.9)	62600 (18347)	60200 (17644)	57700 (16911)	55200 (16178)	52700 (15445)	50100 (14683)	47400 (13892)	
	20	(-6.7)	57300 (16794)	55100 (16149)	52900 (15504)	50600 (14830)	48200 (14127)	45800 (13423)	43400 (12720)	
	15	(-9.4)	52300 (15328)	50300 (14742)	48300 (14156)	46200 (13540)	44000 (12896)	41800 (12251)	39600 (11606)	
	10	(-12.2)	47600 (13951)	45800 (13423)	43900 (12866)	42000 (12309)	40100 (11753)	38100 (11166)	36000 (10551)	
	5	(-15.0)	43100 (12632)	41500 (12163)	39800 (11665)	38100 (11166)	36300 (10639)	34500 (10111)	32600 (9555)	
	0	(-17.8)	39000 (11430)	37500 (10991)	36000 (10551)	34400 (10082)	32800 (9613)	31100 (9115)	29400 (8617)	
	-5	(-20.6)	35000 (10258)	33700 (9877)	32400 (9496)	30900 (9056)	29500 (8646)	28000 (8206)	26400 (7737)	
-10	(-23.3)	31400 (9203)	30200 (8851)	29000 (8499)	27700 (8118)	26400 (7737)	25100 (7356)	23600 (6917)		
BEZA075M6 Compressor Model ZB56KCE	35	(1.7)	86800 (25440)	83300 (24414)	79800 (23388)	76100 (22304)	72300 (21190)	68400 (20047)	64500 (18904)	
	30	(-1.1)	80200 (23505)	77000 (22567)	73800 (21630)	70400 (20633)	67000 (19637)	63400 (18581)	59800 (17526)	
	25	(-3.9)	73800 (21630)	70900 (20780)	68000 (19930)	64900 (19021)	61800 (18113)	58600 (17175)	55300 (16208)	
	20	(-6.7)	67700 (19842)	65100 (19080)	62400 (18288)	59700 (17497)	56900 (16676)	53900 (15797)	50900 (14918)	
	15	(-9.4)	61900 (18142)	59600 (17468)	57200 (16764)	54700 (16032)	52100 (15270)	49500 (14508)	46800 (13716)	
	10	(-12.2)	56400 (16530)	54300 (15914)	52200 (15299)	49900 (14625)	47600 (13951)	45300 (13277)	42800 (12544)	
	5	(-15.0)	51300 (15035)	49400 (14478)	47400 (13892)	45400 (13306)	43400 (12720)	41200 (12075)	39000 (11430)	
	0	(-17.8)	46400 (13599)	44700 (13101)	42900 (12573)	41100 (12046)	39300 (11518)	37400 (10961)	35400 (10375)	
	-5	(-20.6)	41800 (12251)	40300 (11811)	38700 (11342)	37100 (10873)	35400 (10375)	33700 (9877)	31900 (9349)	
-10	(-23.3)	37500 (10991)	36100 (10580)	34700 (10170)	33200 (9730)	31800 (9320)	30200 (8851)	28600 (8382)		

--- Outside Operating Range

CONDENSING UNIT MODEL	SATURATED SUCTION TEMPERATURE		AMBIENT TEMPERATURE ° F ( ° C)													
	° F	° C	80	(26.6)	85	(29.4)	90	(32.2)	95	(35)	100	(37.8)	105	(40.6)	110	(43.3)
	<b>BEZA020L6</b> Compressor Model ZF06K4E	0	-(17.8)	13200	(3869)	12700	(3722)	12200	(3576)	11700	(3429)	11200	(3283)	10700	(3136)	10200
	-5	-(20.6)	11900	(3488)	11500	(3370)	11100	(3253)	10600	(3107)	10200	(2989)	9700	(2843)	9300	(2726)
	-10	-(23.3)	10800	(3165)	10400	(3048)	10000	(2931)	9600	(2814)	9200	(2696)	8800	(2579)	8500	(2491)
	-15	-(26.1)	9700	(2843)	9400	(2755)	9100	(2667)	8700	(2550)	8400	(2462)	8000	(2345)	7700	(2257)
	-20	-(28.9)	8700	(2550)	8500	(2491)	8100	(2374)	7800	(2286)	7500	(2198)	7200	(2110)	6900	(2022)
	-25	-(31.7)	7800	(2286)	7600	(2227)	7300	(2140)	7000	(2052)	6700	(1964)	6400	(1876)	6200	(1817)
	-30	-(34.4)	7000	(2052)	6700	(1964)	6500	(1905)	6200	(1817)	6000	(1758)	5700	(1671)	5500	(1612)
	-35	-(37.2)	6100	(1788)	5900	(1729)	5700	(1671)	5500	(1612)	5300	(1553)	5000	(1465)	4800	(1407)
	-40	-(40.0)	5400	(1583)	5200	(1524)	5000	(1465)	4800	(1407)	4500	(1319)	4300	(1260)	4200	(1231)
<b>BEZA025L6</b> Compressor Model ZF08K4E	0	-(17.8)	16700	(4894)	16100	(4719)	15500	(4543)	14900	(4367)	14200	(4162)	13500	(3957)	12800	(3751)
	-5	-(20.6)	15100	(4426)	14600	(4279)	14100	(4132)	13500	(3957)	12900	(3781)	12300	(3605)	11700	(3429)
	-10	-(23.3)	13700	(4015)	13200	(3869)	12700	(3722)	12200	(3576)	11700	(3429)	11200	(3283)	10600	(3107)
	-15	-(26.1)	12300	(3605)	11900	(3488)	11500	(3370)	11000	(3224)	10600	(3107)	10100	(2960)	9600	(2814)
	-20	-(28.9)	11000	(3224)	10700	(3136)	10300	(3019)	9900	(2902)	9500	(2784)	9100	(2667)	8600	(2521)
	-25	-(31.7)	9900	(2902)	9500	(2784)	9200	(2696)	8900	(2608)	8500	(2491)	8100	(2374)	7700	(2257)
	-30	-(34.4)	8800	(2579)	8500	(2491)	8200	(2403)	7900	(2315)	7600	(2227)	7200	(2110)	6900	(2022)
	-35	-(37.2)	7800	(2286)	7500	(2198)	7300	(2140)	7000	(2052)	6700	(1964)	6400	(1876)	6100	(1788)
	-40	-(40.0)	6900	(2022)	6600	(1934)	6400	(1876)	6200	(1817)	5900	(1729)	5600	(1641)	5300	(1553)
<b>BEZA030L6</b> Compressor Model ZF09K4E	0	-(17.8)	18400	(5393)	17700	(5188)	17000	(4982)	16300	(4777)	15600	(4572)	14800	(4338)	14100	(4132)
	-5	-(20.6)	16700	(4894)	16100	(4719)	15500	(4543)	14800	(4338)	14200	(4162)	13500	(3957)	12800	(3751)
	-10	-(23.3)	15100	(4426)	14600	(4279)	14000	(4103)	13500	(3957)	12900	(3781)	12300	(3605)	11700	(3429)
	-15	-(26.1)	13600	(3986)	13100	(3839)	12700	(3722)	12200	(3576)	11700	(3429)	11100	(3253)	10600	(3107)
	-20	-(28.9)	12200	(3576)	11800	(3458)	11400	(3341)	11000	(3224)	10500	(3077)	10000	(2931)	9600	(2814)
	-25	-(31.7)	10900	(3195)	10600	(3107)	10200	(2989)	9800	(2872)	9400	(2755)	9000	(2638)	8600	(2521)
	-30	-(34.4)	9700	(2843)	9400	(2755)	9100	(2667)	8800	(2579)	8400	(2462)	8100	(2374)	7700	(2257)
	-35	-(37.2)	8600	(2521)	8300	(2433)	8100	(2374)	7800	(2286)	7500	(2198)	7100	(2081)	6800	(1993)
	-40	-(40.0)	7600	(2227)	7300	(2140)	7100	(2081)	6800	(1993)	6600	(1934)	6300	(1846)	6000	(1758)
<b>BEZA035L6</b> Compressor Model ZF11K4E	0	-(17.8)	22200	(6506)	21400	(6272)	20500	(6008)	19700	(5774)	18700	(5481)	17800	(5217)	16800	(4924)
	-5	-(20.6)	20200	(5920)	19500	(5715)	18700	(5481)	17900	(5246)	17100	(5012)	16300	(4777)	15400	(4513)
	-10	-(23.3)	18400	(5393)	17700	(5188)	17000	(4982)	16300	(4777)	15600	(4572)	14800	(4338)	14000	(4103)
	-15	-(26.1)	16600	(4865)	16000	(4689)	15400	(4513)	14800	(4338)	14100	(4132)	13400	(3927)	12700	(3722)
	-20	-(28.9)	14900	(4367)	14400	(4220)	13900	(4074)	13300	(3898)	12700	(3722)	12100	(3546)	11500	(3370)
	-25	-(31.7)	13300	(3898)	12900	(3781)	12400	(3634)	12000	(3517)	11400	(3341)	10900	(3195)	10400	(3048)
	-30	-(34.4)	11900	(3488)	11500	(3370)	11100	(3253)	10700	(3136)	10200	(2989)	9800	(2872)	9300	(2726)
	-35	-(37.2)	10500	(3077)	10200	(2989)	9800	(2872)	9500	(2784)	9100	(2667)	8700	(2550)	8300	(2433)
	-40	-(40.0)	9300	(2726)	9000	(2638)	8700	(2550)	8400	(2462)	8000	(2345)	7700	(2257)	7300	(2140)
<b>BEZA045L6</b> Compressor Model ZF13K4E	0	-(17.8)	26500	(7767)	25500	(7474)	24500	(7181)	23400	(6858)	22400	(6565)	21300	(6243)	20100	(5891)
	-5	-(20.6)	24000	(7034)	23100	(6770)	22200	(6506)	21200	(6213)	20300	(5950)	19300	(5657)	18300	(5363)
	-10	-(23.3)	21700	(6360)	20900	(6125)	20000	(5862)	19200	(5627)	18300	(5363)	17400	(5100)	16500	(4836)
	-15	-(26.1)	19500	(5715)	18700	(5481)	18000	(5275)	17200	(5041)	16500	(4836)	15700	(4601)	14800	(4338)
	-20	-(28.9)	17400	(5100)	16800	(4924)	16100	(4719)	15400	(4513)	14700	(4308)	14000	(4103)	13300	(3898)
	-25	-(31.7)	15500	(4543)	14900	(4367)	14300	(4191)	13700	(4015)	13100	(3839)	12500	(3664)	11900	(3488)
	-30	-(34.4)	13700	(4015)	13200	(3869)	12700	(3722)	12200	(3576)	11700	(3429)	11100	(3253)	10600	(3107)
	-35	-(37.2)	12000	(3517)	11600	(3400)	11100	(3253)	10700	(3136)	10300	(3019)	9900	(2902)	9500	(2784)
	-40	-(40.0)	10400	(3048)	10100	(2960)	9700	(2843)	9400	(2755)	9000	(2638)	8700	(2550)	8400	(2462)

--- Outside Operating Range

CONDENSING UNIT MODEL	SATURATED SUCTION TEMPERATURE		AMBIENT TEMPERATURE ° F ( ° C)								
	° F	° C	80 (26.6)	85 (29.4)	90 (32.2)	95 (35)	100 (37.8)	105 (40.6)	110 (43.3)		
BEZA055L6 Compressor Model ZF15K4E	0	-(17.8)	31700 (9291)	30500 (8939)	29200 (8558)	28000 (8206)	26700 (7825)	25300 (7415)	24000 (7034)		
	-5	-(20.6)	28700 (8411)	27700 (8118)	26600 (7796)	25400 (7444)	24300 (7122)	23100 (6770)	21800 (6389)		
	-10	-(23.3)	26000 (7620)	25000 (7327)	24100 (7063)	23100 (6770)	22000 (6448)	20900 (6125)	19800 (5803)		
	-15	-(26.1)	23400 (6858)	22600 (6624)	21700 (6360)	20800 (6096)	19900 (5832)	19000 (5569)	18000 (5275)		
	-20	-(28.9)	21000 (6155)	20300 (5950)	19500 (5715)	18800 (5510)	17900 (5246)	17100 (5012)	16200 (4748)		
	-25	-(31.7)	18800 (5510)	18200 (5334)	17500 (5129)	16800 (4924)	16100 (4719)	15400 (4513)	14600 (4279)		
	-30	-(34.4)	16800 (4924)	16200 (4748)	15600 (4572)	15000 (4396)	14400 (4220)	13700 (4015)	13100 (3839)		
	-35	-(37.2)	14900 (4367)	14400 (4220)	13900 (4074)	13300 (3898)	12800 (3751)	12200 (3576)	11600 (3400)		
	-40	-(40.0)	13100 (3839)	12700 (3722)	12200 (3576)	11800 (3458)	11300 (3312)	10800 (3165)	10300 (3019)		
BEZA060L6 Compressor Model ZF18K4E	0	-(17.8)	38200 (11196)	36800 (10785)	35300 (10346)	33900 (9936)	32400 (9496)	30900 (9056)	29300 (8587)		
	-5	-(20.6)	34700 (10170)	33400 (9789)	32200 (9437)	30800 (9027)	29500 (8646)	28200 (8265)	26800 (7855)		
	-10	-(23.3)	31400 (9203)	30300 (8880)	29200 (8558)	28000 (8206)	26800 (7855)	25600 (7503)	24400 (7151)		
	-15	-(26.1)	28300 (8294)	27300 (8001)	26400 (7737)	25300 (7415)	24300 (7122)	23200 (6800)	22200 (6506)		
	-20	-(28.9)	25400 (7444)	24600 (7210)	23700 (6946)	22800 (6682)	21900 (6419)	21000 (6155)	20100 (5891)		
	-25	-(31.7)	22700 (6653)	22000 (6448)	21300 (6243)	20500 (6008)	19700 (5774)	18900 (5539)	18100 (5305)		
	-30	-(34.4)	20200 (5920)	19600 (5744)	19000 (5569)	18300 (5363)	17600 (5158)	16900 (4953)	16200 (4748)		
	-35	-(37.2)	17900 (5246)	17300 (5070)	16800 (4924)	16200 (4748)	15600 (4572)	15000 (4396)	14400 (4220)		
	-40	-(40.0)	15700 (4601)	15200 (4455)	14700 (4308)	14200 (4162)	13700 (4015)	13200 (3869)	12700 (3722)		
BEZA075L6 Compressor Model ZF24K4E	0	-(17.8)	47000 (13775)	45400 (13306)	43600 (12778)	41900 (12280)	40100 (11753)	38200 (11196)	36200 (10610)		
	-5	-(20.6)	42600 (12485)	41100 (12046)	39600 (11606)	38100 (11166)	36400 (10668)	34800 (10199)	33000 (9672)		
	-10	-(23.3)	38500 (11284)	37200 (10903)	35800 (10492)	34500 (10111)	33000 (9672)	31500 (9232)	30000 (8792)		
	-15	-(26.1)	34600 (10141)	33400 (9789)	32300 (9467)	31100 (9115)	29800 (8734)	28500 (8353)	27200 (7972)		
	-20	-(28.9)	31000 (9086)	30000 (8792)	29000 (8499)	27900 (8177)	26800 (7855)	25700 (7532)	24500 (7181)		
	-25	-(31.7)	27600 (8089)	26700 (7825)	25900 (7591)	24900 (7298)	24000 (7034)	23000 (6741)	21900 (6419)		
	-30	-(34.4)	24500 (7181)	23700 (6946)	23000 (6741)	22100 (6477)	21300 (6243)	20400 (5979)	19500 (5715)		
	-35	-(37.2)	21600 (6331)	20900 (6125)	20200 (5920)	19500 (5715)	18800 (5510)	18000 (5275)	17200 (5041)		
	-40	-(40.0)	18900 (5539)	18300 (5363)	17700 (5188)	17100 (5012)	16400 (4807)	15800 (4631)	15000 (4396)		
BEZA100L6 Compressor Model ZF33K4E	0	-(17.8)	64000 (18757)	61600 (18054)	59100 (17321)	56600 (16589)	54000 (15826)	51400 (15064)	48700 (14273)		
	-5	-(20.6)	58300 (17087)	56100 (16442)	53900 (15797)	51600 (15123)	49400 (14478)	47000 (13775)	44700 (13101)		
	-10	-(23.3)	52800 (15475)	50900 (14918)	48900 (14332)	46900 (13746)	44900 (13159)	42900 (12573)	40800 (11958)		
	-15	-(26.1)	47600 (13951)	45900 (13453)	44200 (12954)	42400 (12427)	40600 (11899)	38800 (11372)	37000 (10844)		
	-20	-(28.9)	42700 (12515)	41200 (12075)	39600 (11606)	38100 (11166)	36500 (10698)	35000 (10258)	33400 (9789)		
	-25	-(31.7)	38000 (11137)	36600 (10727)	35300 (10346)	33900 (9936)	32600 (9555)	31200 (9144)	29900 (8763)		
	-30	-(34.4)	33500 (9818)	32300 (9467)	31100 (9115)	29900 (8763)	28800 (8441)	27600 (8089)	26500 (7767)		
	-35	-(37.2)	29200 (8558)	28100 (8236)	27100 (7943)	26100 (7649)	25000 (7327)	24100 (7063)	23100 (6770)		
	-40	-(40.0)	25100 (7356)	24200 (7093)	23200 (6800)	22300 (6536)	21400 (6272)	20600 (6038)	19800 (5803)		

--- Outside Operating Range



CONDENSING UNIT MODEL	COMPRESSOR MODEL NO.	POWER SUPPLY	COMPRESSOR		CONDENSER FAN MOTOR		UNIT		
			RLA	LRA	QTY	FLA	MCA	MOP	
BEZA020H2-*	S2A	ZB15KCE-PFV	208-230/1/60	15.7	61	1	1.1	20.7	35
	T3A	ZB15KCE-TF5	208-230/3/60	8.9	55	1	1.1	12.2	20
	T4A	ZB15KCE-TFD	460/3/60	5.0	27	1	0.6	6.9	15
BEZA025H2-*	S2A	ZB19KCE-PFV	208-230/1/60	17.9	73	1	1.1	23.5	40
	T3A	ZB19KCE-TF5	208-230/3/60	10.0	63	1	1.1	13.6	20
	T4A	ZB19KCE-TFD	460/3/60	5.0	31	1	0.6	6.9	15
BEZA030H2-*	S2A	ZB21KCE-PFV	208-230/1/60	20.7	100	1	2.1	28.0	45
	T3A	ZB21KCE-TF5	208-230/3/60	12.1	77	1	2.1	17.2	25
	T4A	ZB21KCE-TFD	460/3/60	6.1	39	1	1.1	8.7	15
	T5A	ZB21KCE-TFE	575/3/60	5.0	31	1	0.9	7.2	15
BEZA035H2-*	S2A	ZB26KC-PFV	208-230/1/60	20.7	127	1	2.1	28.0	45
	T3A	ZB26KC-TF5	208-230/3/60	13.9	88	1	2.1	19.5	30
	T4A	ZB26KC-TFD	460/3/60	7.1	44	1	1.1	10.0	15
	T5A	ZB26KC-TFE †	575/3/60	5.0	34	1	0.9	7.2	15
BEZA040H2-*	S2A	ZB30KCE-PFV	208-230/1/60	26.8	132	1	2.1	35.6	60
	T3A	ZB30KCE-TF5	208-230/3/60	15.7	115	1	2.1	21.7	35
	T4A	ZB30KCE-TFD	460/3/60	7.5	47.5	1	1.1	10.5	15
	T5A	ZB30KCE-TFE †	575/3/60	6.0	38	1	0.9	8.4	15
BEZA050H2-*	S2A	ZB38KCE-PFV	208-230/1/60	31.1	175	1	2.1	41.0	70
	T3A	ZB38KCE-TF5	208-230/3/60	22.1	115	1	2.1	29.7	50
	T4A	ZB38KCE-TFD	460/3/60	9.6	63	1	1.1	13.1	20
	T5A	ZB38KCE-TFE †	575/3/60	7.7	50	1	0.9	10.5	15
BEZA060H2-*	T3A	ZB45KCE-TF5	208-230/3/60	22.5	156	1	2.1	30.2	50
	T4A	ZB45KCE-TFD	460/3/60	11.5	70	1	1.1	15.5	25
	T5A	ZB45KCE-TFE †	575/3/60	9.2	56	1	0.9	12.4	20
BEZA075H2-*	T3A	ZB56KCE-TWC	208-230/3/60	30.0	189	1	2.1	39.6	70
	T4A	ZB56KCE-TWD	460/3/60	15.7	94	1	1.1	20.7	35
	T5A	ZB56KCE-TWE	575/3/60	11.4	74	1	0.9	15.2	25
BEZA020M6-*	S2A	ZB15KCE-PFV	208-230/1/60	15.7	61	1	1.1	20.7	35
	T3A	ZB15KCE-TF5	208-230/3/60	8.9	55	1	1.1	12.2	20
	T4A	ZB15KCE-TFD	460/3/60	5.0	27	1	0.6	6.9	15
BEZA025M6-*	S2A	ZB19KCE-PFV	208-230/1/60	17.9	73	1	1.1	23.5	40
	T3A	ZB19KCE-TF5	208-230/3/60	10.0	63	1	1.1	13.6	20
	T4A	ZB19KCE-TFD	460/3/60	5.0	31	1	0.6	6.9	15
BEZA030M6-*	S2A	ZB21KCE-PFV	208-230/1/60	20.7	100	1	2.1	28.0	45
	T3A	ZB21KCE-TF5	208-230/3/60	12.1	77	1	2.1	17.2	25
	T4A	ZB21KCE-TFD	460/3/60	6.1	39	1	1.1	8.7	15
	T5A	ZB21KCE-TFE	575/3/60	5.0	31	1	0.9	7.2	15
BEZA035M6-*	S2A	ZB26KCE-PFV	208-230/1/60	23.6	127	1	2.1	31.6	50
	T3A	ZB26KCE-TF5	208-230/3/60	13.9	88	1	2.1	19.5	30
	T4A	ZB26KCE-TFD	460/3/60	7.1	44	1	1.1	10.0	15
	T5A	ZB26KCE-TFE †	575/3/60	5.7	34	1	0.9	8.0	15
BEZA040M6-*	S2A	ZB30KCE-PFV	208-230/1/60	26.8	132	1	2.1	35.6	60
	T3A	ZB30KCE-TF5	208-230/3/60	15.7	115	1	2.1	21.7	35
	T4A	ZB30KCE-TFD	460/3/60	7.5	47.5	1	1.1	10.5	15
	T5A	ZB30KCE-TFE †	575/3/60	6.0	38	1	0.9	8.4	15
BEZA050M6-*	S2A	ZB38KCE-PFV	208-230/1/60	31.1	175	1	2.1	41.0	70
	T3A	ZB38KCE-TF5	208-230/3/60	22.1	115	1	2.1	29.7	50
	T4A	ZB38KCE-TFD	460/3/60	9.6	63	1	1.1	13.1	20
	T5A	ZB38KCE-TFE †	575/3/60	7.7	50	1	0.9	10.5	15
BEZA060M6-*	T3A	ZB45KCE-TF5	208-230/3/60	22.5	156	1	2.1	30.2	50
	T4A	ZB45KCE-TFD	460/3/60	11.5	70	1	1.1	15.5	25
	T5A	ZB45KCE-TFE †	575/3/60	9.2	56	1	0.9	12.4	20
BEZA075M6-*	T3A	ZB56KCE-TWC	208-230/3/60	30.0	189	1	2.1	39.6	70
	T4A	ZB56KCE-TWD	460/3/60	15.7	94	1	1.1	20.7	35
	T5A	ZB56KCE-TWE	575/3/60	11.4	74	1	0.9	15.2	25

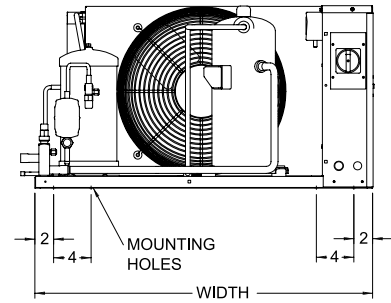
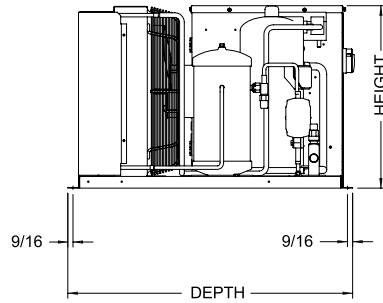
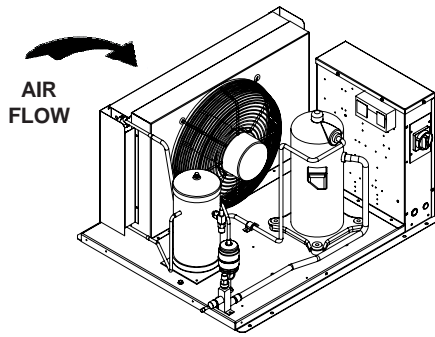
\* I = Indoor, H = Outdoor. Above listed RLA value is based on UL rating method and may differ from published compressor RLA data.

† Not all 575V compressors available at time of printing

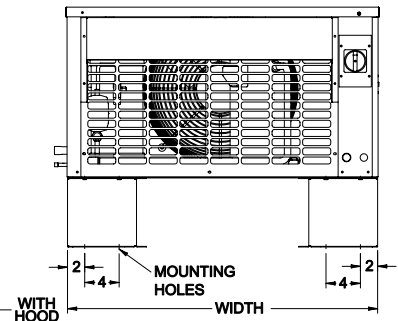
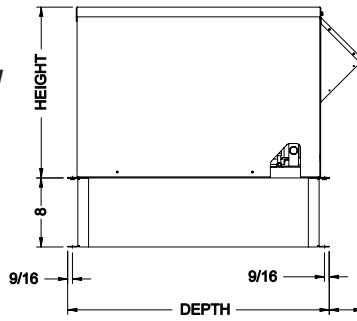
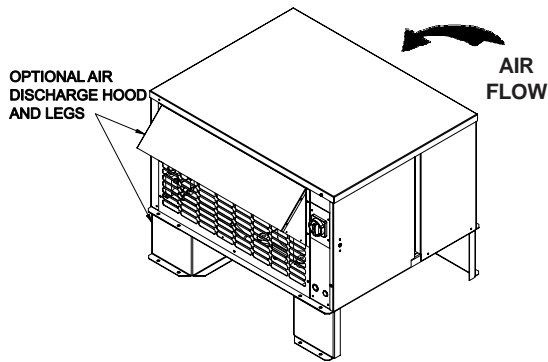
CONDENSING UNIT MODEL	COMPRESSOR MODEL NO.	POWER SUPPLY	COMPRESSOR		CONDENSER FAN MOTOR		UNIT		
			RLA	LRA	QTY	FLA	MCA	MOP	
BEZA020L6-*	S2A	ZF06K4E-PFV	208-230/1/60	13.6	61	1	0.5	17.5	30
	T3A	ZF06K4E-TF5	208-230/3/60	9.3	55	1	0.5	12.1	20
BEZA025L6-*	S2A	ZF08K4E-PFV	208-230/1/60	16.4	73	1	1.1	21.6	35
	T3A	ZF08K4E-TF5	208-230/3/60	9.7	63	1	1.1	13.2	20
	T4A	ZF08K4E-TFD	460/3/60	5.0	39	1	0.6	6.9	15
BEZA030L6-*	S2A	ZF09KCE-PFV	208-230/1/60	16.4	88	1	1.1	21.6	35
	T3A	ZF09KCE-TF5	208-230/3/60	11.1	77	1	1.1	15.0	25
	T4A	ZF09KCE-TFD	460/3/60	5.7	39	1	0.6	7.7	15
	T5A	ZF09KCE-TFE	575/3/60	4.3	31	1	0.5	5.9	15
BEZA035L6-*	S2A	ZF11K4E-PFV	208-230/1/60	20.7	109	1	1.1	27.0	45
	T3A	ZF11K4E-TF5	208-230/3/60	13.6	88	1	1.1	18.1	30
	T4A	ZF11K4E-TFD	460/3/60	7.1	44	1	0.6	9.5	15
	T5A	ZF11K4E-TFE	575/3/60	5.0	34	1	0.5	6.8	15
BEZA045L6-*	S2A	ZF13K4E-PFV	208-230/1/60	26.8	129	1	2.1	35.6	60
	T3A	ZF13K4E-TF5	208-230/3/60	15.0	99	1	2.1	20.9	35
	T4A	ZF13K4E-TFD	460/3/60	8.2	49.5	1	1.1	11.4	15
	T5A	ZF13K4E-TFE	575/3/60	8.2	40	1	0.9	11.2	15
BEZA055L6-*	S2A	ZF15K4E-PFV	208-230/1/60	31.8	169	1	2.1	41.9	70
	T3A	ZF15K4E-TF5	208-230/3/60	21.4	123	1	2.1	28.9	50
	T4A	ZF15K4E-TFD	460/3/60	9.6	62	1	1.1	13.1	20
	T5A	ZF15K4E-TFE	575/3/60	7.9	50	1	0.9	10.8	15
BEZA060L6-*	T3A	ZF18K4E-TF5	208-230/3/60	23.9	156	1	2.1	32.0	50
	T4A	ZF18K4E-TFD	460/3/60	9.3	70	1	1.1	12.7	20
	T5A	ZF18K4E-TFE	575/3/60	7.9	54	1	0.9	10.8	15
BEZA075L6-*	T3A	ZF24K4E-TWC	208-230/3/60	30.0	189	1	2.1	39.6	70
	T4A	ZF24K4E-TWD	460/3/60	15.7	94	1	1.1	20.7	35
	T5A	ZF24K4E-TWE	575/3/60	8.9	74	1	0.9	12.0	20
BEZA100L6-*	T3A	ZF33K4E-TWC	208-230/3/60	43.6	278	1	2.1	56.6	100
	T4A	ZF33K4E-TWD	460/3/60	21.1	127	1	1.1	27.5	45
	T5A	ZF33K4E-TWE	575/3/60	16.1	100	1	0.9	21.0	35

\* I = Indoor, H = Outdoor. Above listed RLA value is based on UL rating method and may differ from published compressor RLA data.

# DIMENSIONAL DATA (Models 020 to 035 L6)



## INDOOR DIMENSIONS



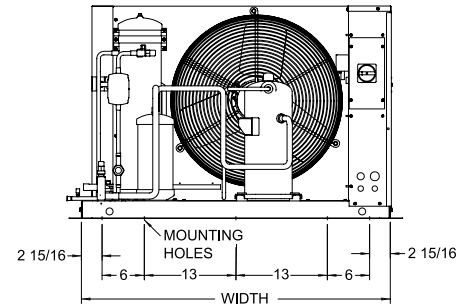
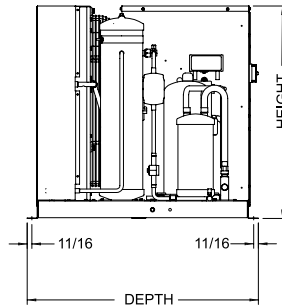
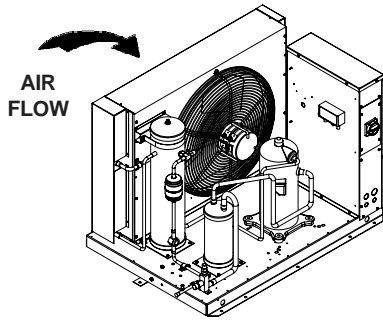
## OUTDOOR DIMENSIONS

CONDENSING UNIT MODEL	WIDTH		DEPTH				HEIGHT*	
			Base		With Hood			
	Inches	mm	Inches	mm	Inches	mm	Inches	mm
BEZ A 020	36 3/8	924	30 3/8	772	34 3/8	873	19 7/8	505
BEZ A 025	36 3/8	924	30 3/8	772	34 3/8	873	19 7/8	505
BEZ A 030 L6	36 3/8	924	30 3/8	772	34 3/8	873	19 7/8	505
BEZ A 035 L6	36 3/8	924	30 3/8	772	34 3/8	873	19 7/8	505

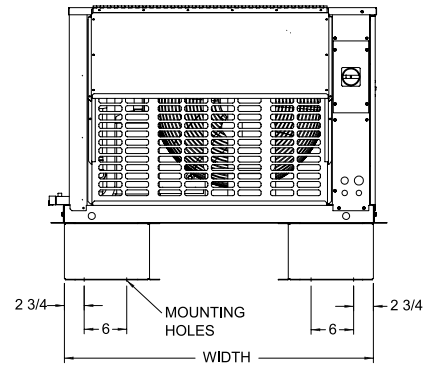
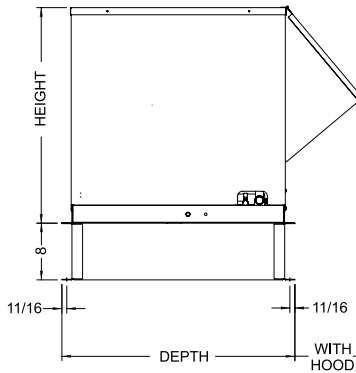
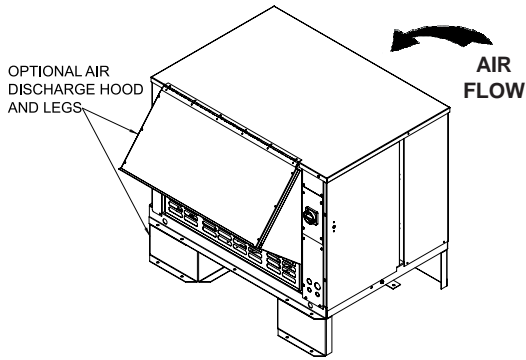
\*Note: Dimensions for indoor models may be smaller by up to 3/8" (10 mm)

NOTE: Discharge hood and legs are optional components

# DIMENSIONAL DATA (Models 030 H2/M6 to 100)



## INDOOR DIMENSIONS



## OUTDOOR DIMENSIONS

CONDENSING UNIT MODEL	WIDTH		DEPTH				HEIGHT*	
			Base		With Hood			
	Inches	mm	Inches	mm	Inches	mm	Inches	mm
BEZ A 030 H2/M6	47 3/8	1203	32 7/8	835	43	1092	30 3/8	772
BEZ A 035 H2/M6	47 3/8	1203	32 7/8	835	43	1092	30 3/8	772
BEZ A 040 H2/M6	47 3/8	1203	32 7/8	835	43	1092	30 3/8	772
BEZ A 045 L6	47 3/8	1203	32 7/8	835	43	1092	30 3/8	772
BEZ A 050 H2/M6	47 3/8	1203	32 7/8	835	43	1092	30 3/8	772
BEZ A 055 L6	47 3/8	1203	32 7/8	835	43	1092	30 3/8	772
BEZ A 060	47 3/8	1203	32 7/8	835	43	1092	30 3/8	772
BEZ A 075	55 5/8	1413	35 7/8	911	43	1092	41 7/8	1064
BEZ A 100 †	55 5/8	1413	35 7/8	911	43	1092	41 7/8	1064

\*Note: Dimensions for indoor models may be smaller by up to 3/8" (10 mm)

† Options may be limited. Consult factory for details.

NOTE: Discharge hood and legs are optional components



# SPECIFICATIONS

CONDENSING UNIT MODEL	COMPRESSOR MODEL	UNIT CONNECTIONS				RECEIVER CAPACITY 90% FULL		APPROX. SHIPPING WEIGHT			
		SUCTION (OD)		LIQUID (OD)				INDOOR		OUTDOOR	
		Inches	mm	Inches	mm	Lbs.	Kgs	Lbs.	Kgs	Lbs.	Kgs
BEZA020H2	ZB15KCE	7/8	22	3/8	10	13	6	280	127	300	136
BEZA025H2	ZB19KCE	7/8	22	3/8	10	16	7	290	132	320	145
BEZA030H2	ZB21KCE	1 1/8	29	1/2	13	25	11	380	172	410	186
BEZA035H2	ZB26KC	1 1/8	29	1/2	13	25	11	380	172	415	188
BEZA040H2	ZB30KCE	1 1/8	29	1/2	13	25	11	390	177	420	191
BEZA050H2	ZB38KCE	1 1/8	29	1/2	13	25	11	390	177	425	193
BEZA060H2	ZB45KCE	1 3/8	35	5/8	16	35	16	430	195	470	213
BEZA075H2	ZB56KCE	1 3/8	35	5/8	16	35	16	440	200	480	218
BEZA020M6	ZB15KCE	7/8	22	3/8	10	11	5	280	127	300	136
BEZA025M6	ZB19KCE	7/8	22	1/2	13	14	6	290	132	320	145
BEZA030M6	ZB21KCE	1 1/8	29	1/2	13	22	10	380	172	410	186
BEZA035M6	ZB26KCE	1 1/8	29	1/2	13	22	10	380	172	415	188
BEZA040M6	ZB30KCE	1 1/8	29	1/2	13	22	10	390	177	420	191
BEZA050M6	ZB38KCE	1 1/8	29	1/2	13	22	10	390	177	425	193
BEZA060M6	ZB45KCE	1 3/8	35	5/8	16	30	14	430	195	470	213
BEZA075M6	ZB56KCE	1 3/8	35	5/8	16	30	14	440	200	480	218
BEZA020L6	ZF06K4E	7/8	22	3/8	10	11	5	290	132	315	143
BEZA025L6	ZF08K4E	7/8	22	3/8	10	14	6	310	141	335	152
BEZA030L6	ZF09K4E	7/8	22	3/8	10	14	6	390	177	425	193
BEZA035L6	ZF11K4E	1 1/8	29	1/2	13	14	6	400	181	430	195
BEZA045L6	ZF13K4E	1 1/8	29	1/2	13	22	10	400	181	435	197
BEZA055L6	ZF15K4E	1 1/8	29	1/2	13	22	10	400	181	440	200
BEZA060L6	ZF18K4E	1 3/8	35	1/2	13	30	14	450	204	485	220
BEZA075L6	ZF24K4E	1 3/8	35	5/8	16	30	14	460	209	495	225
BEZA100L6 ^	ZF33K4E	1 3/8	35	5/8	16	48	22	500	227	545	247

^ Options may be limited. Consult factory for details.

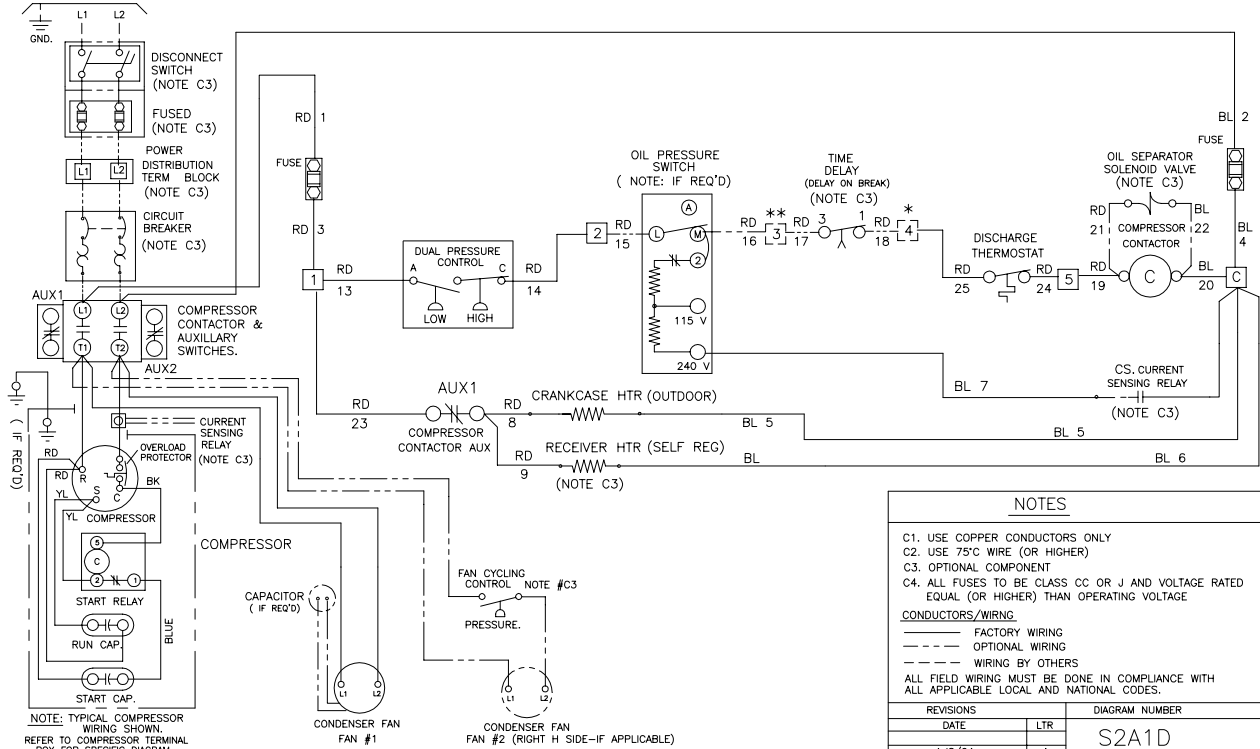
# TYPICAL SYSTEM WIRING DIAGRAM

## 208-230/1/60

### CONDENSING UNIT WIRING DIAGRAM

- 208/230V-1-60 or 200/220V-1-50 Hz
- INHERENT LINE BREAK MOTOR PROTECTION
- STANDARD CONTROL CIRCUIT-WITH DISCHARGE THERMOSTAT

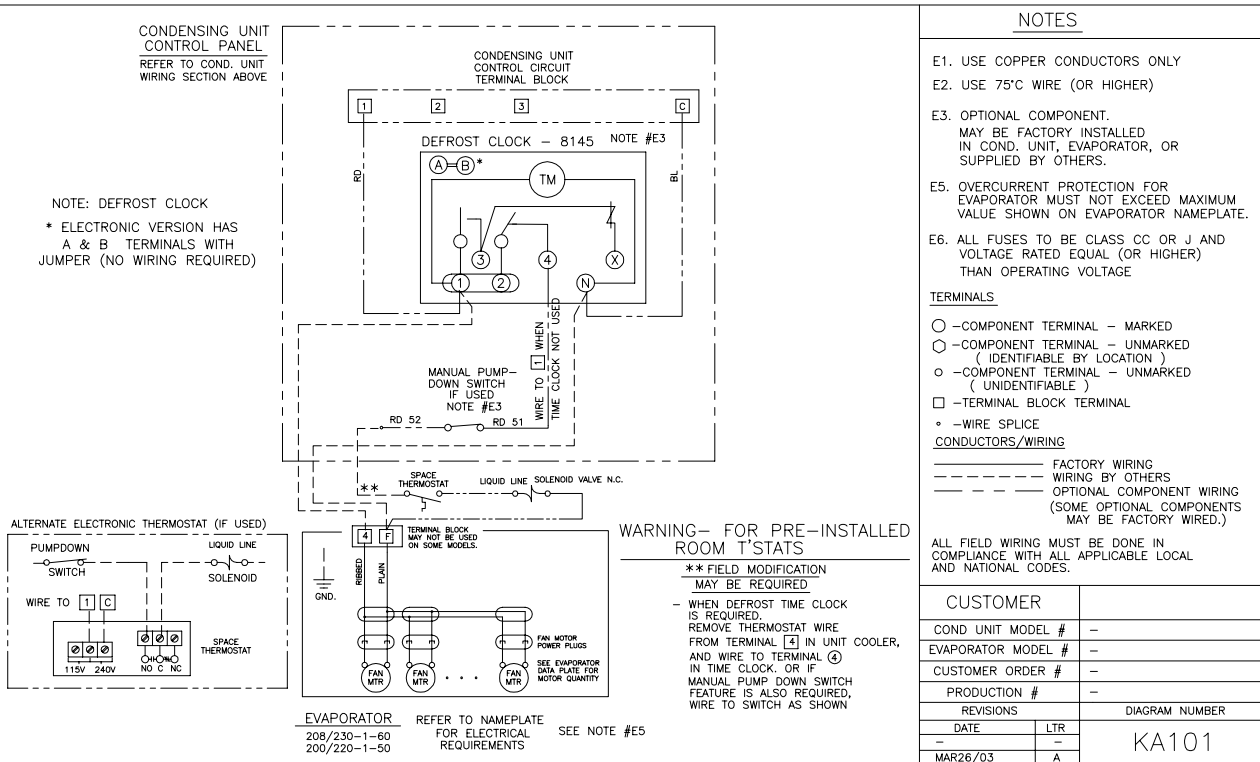
REFER TO CONDENSING UNIT NAMEPLATE FOR ELECTRICAL REQUIREMENTS



- NOTES**
- C1. USE COPPER CONDUCTORS ONLY
  - C2. USE 75°C WIRE (OR HIGHER)
  - C3. OPTIONAL COMPONENT
  - C4. ALL FUSES TO BE CLASS CC OR J AND VOLTAGE RATED EQUAL (OR HIGHER) THAN OPERATING VOLTAGE
- CONDUCTORS/WIRING**
- FACTORY WIRING
  - - - OPTIONAL WIRING
  - - - WIRING BY OTHERS
- ALL FIELD WIRING MUST BE DONE IN COMPLIANCE WITH ALL APPLICABLE LOCAL AND NATIONAL CODES.
- | REVISIONS |     | DIAGRAM NUMBER |
|-----------|-----|----------------|
| DATE      | LTR |                |
| Jul/04    | A   | S2A1D          |

### TYPICAL EVAPORATOR WIRING: FOR SINGLE AIR DEFROST EVAPORATOR- SINGLE POINT

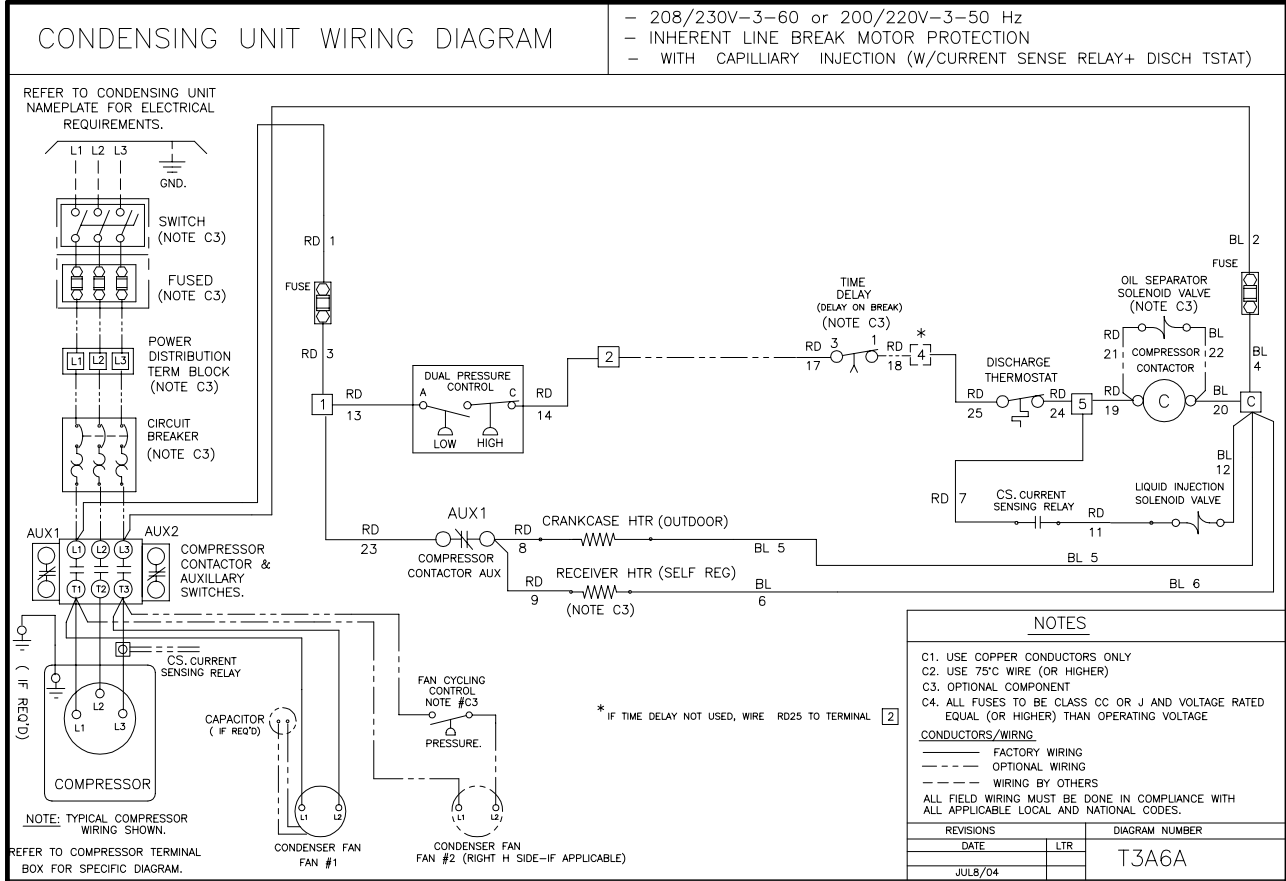
FOR USE WITH: 208/230-1-60, 200/220-1-50 OR 208/230-3-60, 200/220-3-50 CONDENSING UNITS WITH OR WITHOUT DEFROST TIME CLOCK AND FOR TOTAL EVAP FAN AMPS NOT EXCEEDING 12A



- NOTES**
- E1. USE COPPER CONDUCTORS ONLY
  - E2. USE 75°C WIRE (OR HIGHER)
  - E3. OPTIONAL COMPONENT. MAY BE FACTORY INSTALLED IN COND. UNIT, EVAPORATOR, OR SUPPLIED BY OTHERS.
  - E5. OVERCURRENT PROTECTION FOR EVAPORATOR MUST NOT EXCEED MAXIMUM VALUE SHOWN ON EVAPORATOR NAMEPLATE.
  - E6. ALL FUSES TO BE CLASS CC OR J AND VOLTAGE RATED EQUAL (OR HIGHER) THAN OPERATING VOLTAGE
- TERMINALS**
- - COMPONENT TERMINAL - MARKED
  - - COMPONENT TERMINAL - UNMARKED (IDENTIFIABLE BY LOCATION)
  - - COMPONENT TERMINAL - UNMARKED (UNIDENTIFIABLE)
  - - TERMINAL BLOCK TERMINAL
  - - WIRE SPLICE
- CONDUCTORS/WIRING**
- FACTORY WIRING
  - - - WIRING BY OTHERS
  - - - OPTIONAL COMPONENT WIRING (SOME OPTIONAL COMPONENTS MAY BE FACTORY WIRED.)
- ALL FIELD WIRING MUST BE DONE IN COMPLIANCE WITH ALL APPLICABLE LOCAL AND NATIONAL CODES.
- | REVISIONS |     | DIAGRAM NUMBER |
|-----------|-----|----------------|
| DATE      | LTR |                |
| MAR26/03  | A   | KA101          |

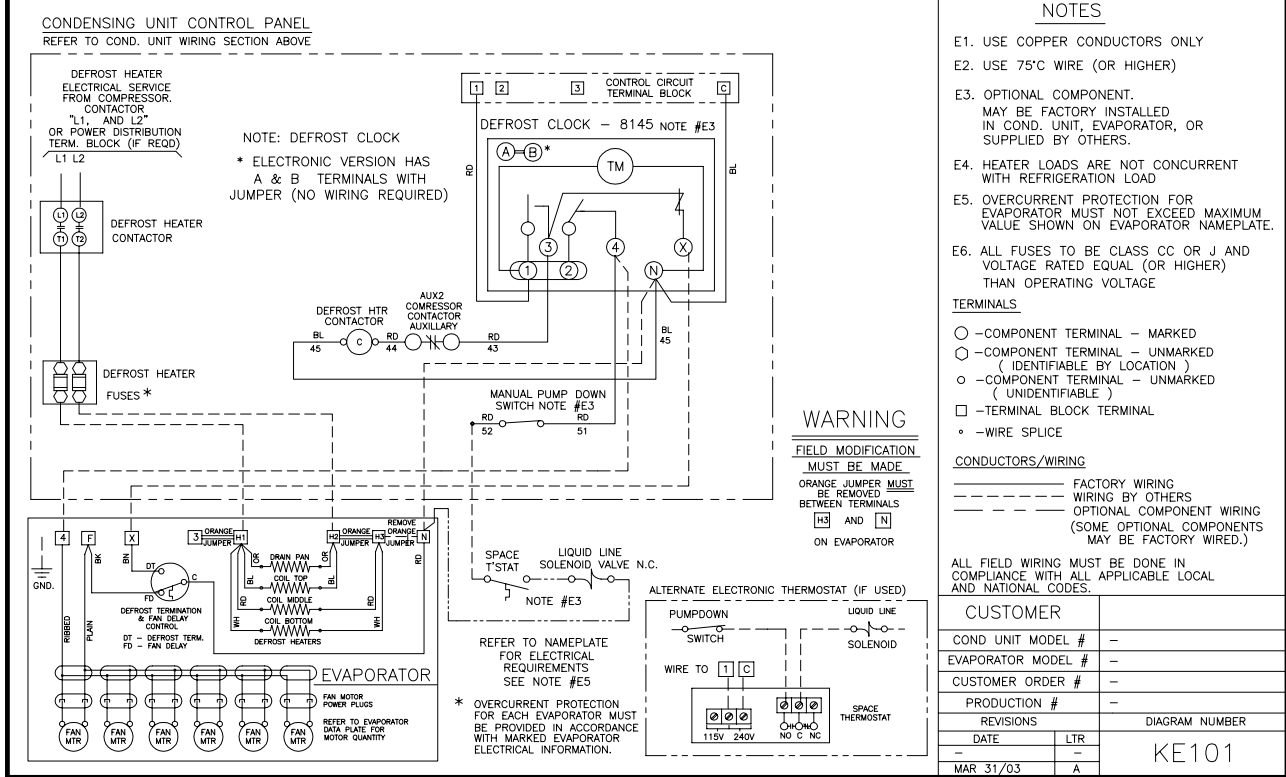
# TYPICAL SYSTEM WIRING DIAGRAM

## 208-230/3/60



### TYPICAL EVAPORATOR WIRING: FOR SINGLE LOW PROFILE ELECT DEFROST EVAPORATOR- SINGLE POINT

FOR USE WITH: 230V SINGLE OR THREE PHASE CONDENSING UNITS WITH DEFROST TIME CLOCK, AND DEFR. HTR. CONTACTOR.

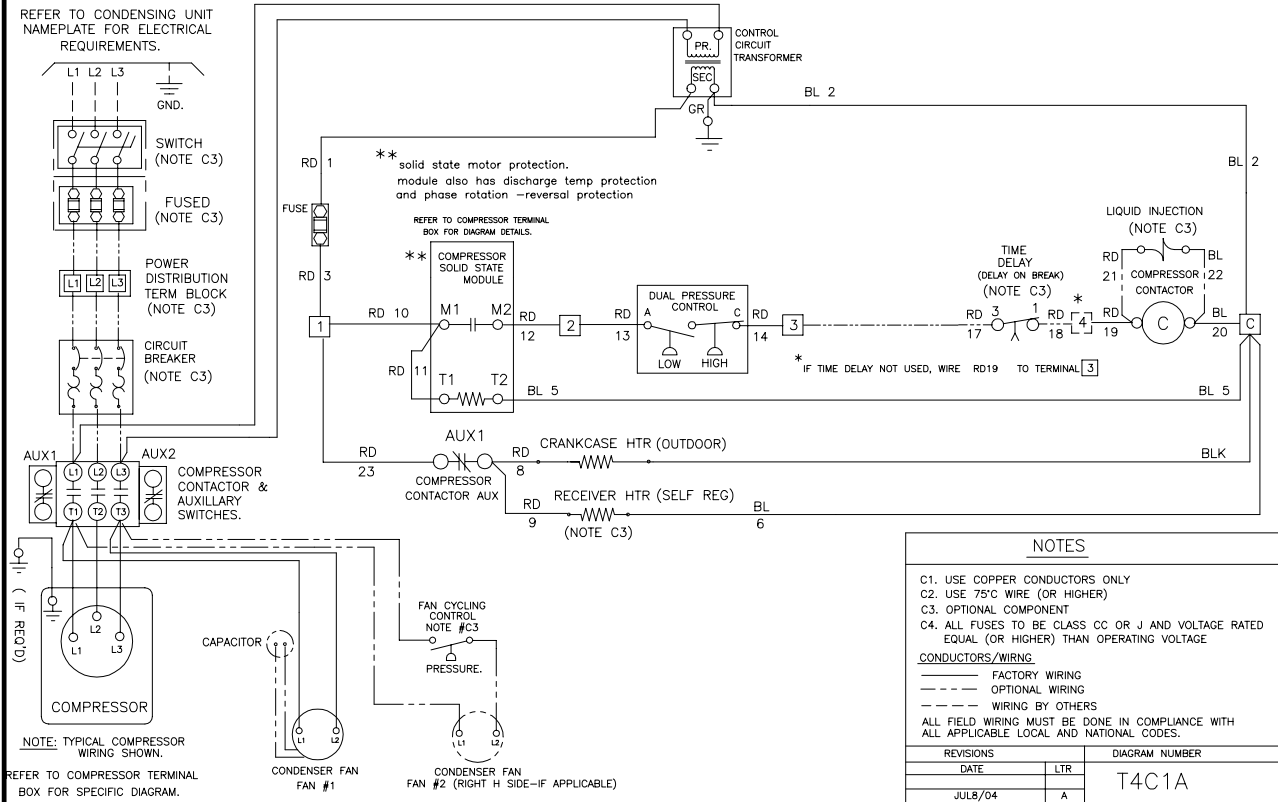


# TYPICAL SYSTEM WIRING DIAGRAM

## 460/3/60, 575/3/60

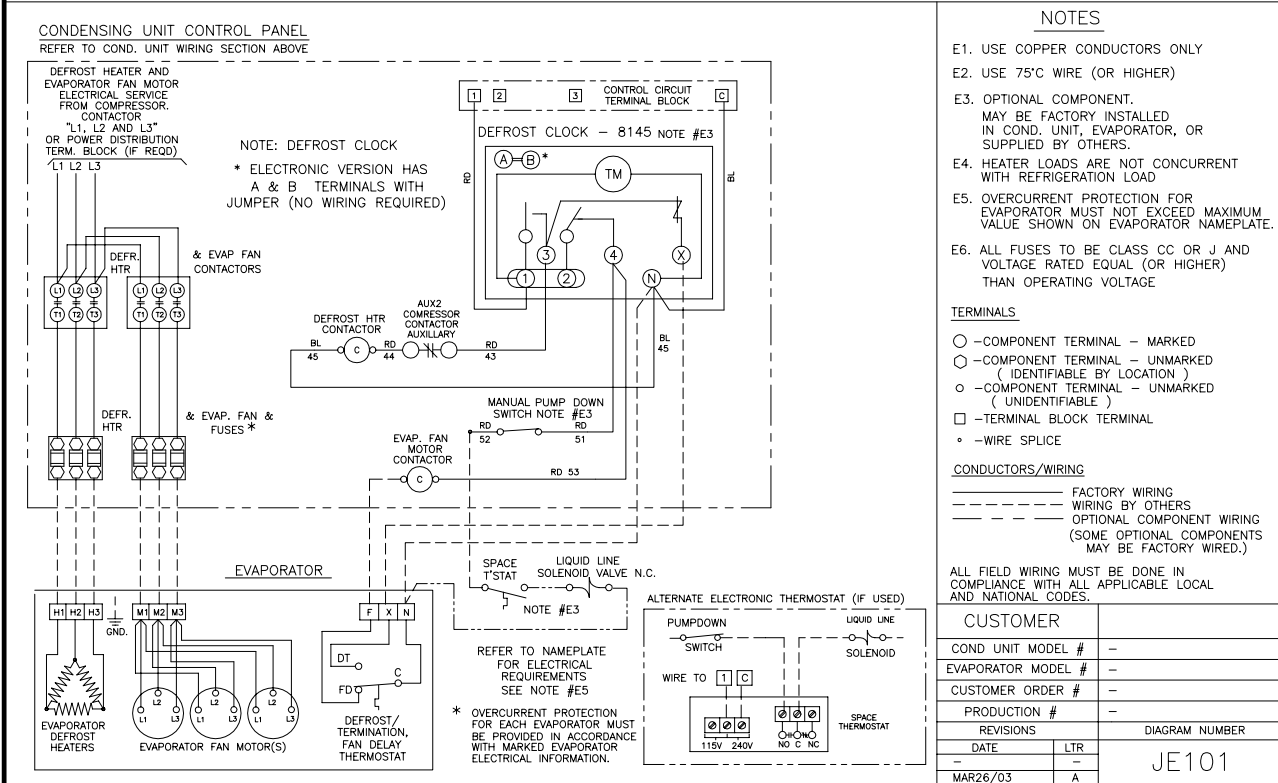
### CONDENSING UNIT WIRING DIAGRAM

- 460-3-60 ,575-3-60 Hz or 380/400V-3-50 Hz
- SOLID STATE MODULE MOTOR PROTECTION (COPELAND SCROLL)
- STANDARD CONTROL CIRCUIT -W/ OPTIONAL CAPILL INJECTION



### TYPICAL EVAPORATOR WIRING: FOR SINGLE MED PROFILE ELECT DEFROST EVAPORATOR— SINGLE POINT

FOR USE WITH: THREE PHASE CONDENSING UNITS WITH DEFROST TIME CLOCK, & EVAP FAN AND DEFR. HTR. CONTACTORS.





# NOTES

# NOTES

# PRODUCT FEATURES

## Introducing The New SmartVap™ Controller

Bally Refrigeration has taken the concept of electronic controls and made it simple. SmartVap™ is a simple control located in the evaporator that controls box temperature and all aspects of the electric defrost. Evaporator includes factory installed:

- Thermostatic Expansion Valve
- Solenoid Valve
- Selected Nozzle
- Disconnect Switch (optional)

By eliminating the time clock and heater contactor usually located in the condensing unit, the SmartVap™ makes wiring the refrigeration system a breeze.

Also eliminating the room thermostat, defrost termination switch and the fan delay switch, SmartVap™ reduces costly component failures and simplifies field installation.

PLUS - as an electronic controller, SmartVap™ allows for more accurate temperature control in the box. SmartVap™ is field adjustable for unique applications.



***The SmartVap™ Controller replaces these components in the condensing unit:***



Time Clock



Defrost Heater  
Contactor



Defrost Heater  
Fusing

**New**



Contact us for details!

System	
Model Number	Date of Start-Up
Serial Number	Service Contractor
Refrigerant	Phone
Electrical Supply	Fax



**A Division of BALMAC International, Inc.**  
**61 Broadway, Suite 1900, New York, NY 10006-2701**  
**(212) 898-9699 Fax: (212) 514-9234**  
**www.bmil.com - bmil@bmil.com**

DISTRIBUTED BY: \_\_\_\_\_



*Due to Manufacturer's policy of continuous product improvement,  
 the Manufacturer reserves the right to make changes without notice.*



07/20/04