

Bally

REFRIGERATORS

VALUE LINE REFRIGERATOR

Utilizing Environmentally Safe, CFC-free R-134a Refrigerant



SW72-18

Models Available

- SW27-8
- SW48-8
- SW48-10
- SW48-12
- SW60-8
- SW60-12
- SW60-16
- SW72-12
- SW72-18

Refrigerator

SANDWICH UNIT REFRIGERATORS

Standard Features

- Unique Air Flow Distribution Allows Pan Product to Maintain 33°–41°F Being in Compliance with and Certified Under the New '98 NSF Standard For Preparation Units.
- Modern, State-of-the-Art Styling
- Performance Rated Refrigeration System Utilizing Environmentally Safe R-134a Refrigerant
- Easily Serviceable Back Mounted Compressor
- 2" Non-CFC Polyurethane Foam Insulation
- Spring Loaded, Self Closing Door
- Magnetic Snap-In Gasket
- Adjustable 6" Legs
- Heavy-Duty, Epoxy-Coated Steel Shelves
- Interior Hanging Thermometer
- 12" Deep Full Length Nylon Cutting Board
- Cabinet Construction Consisting of Stainless Steel Front and Top, Aluminum End Panels, Case Back and Interior
- Non-Corrosive, Plasticized Fin Evaporator Coil
- Completely Enclosed, Vented and Removable Case Back
- Automatic, Energy Saving, Non-Electric Condensate Disposal
- 1/6 Size Pans, 4" Deep
- 10 ft Cord and Plug Attached

Optional Features & Accessories

- Casters
- Remote Models R
- Stainless Steel End Panels-SA Models
- Stainless Steel Interior & Exterior-SS Models
- Stainless Steel Finished Back in Lieu of Aluminum
- Stainless Steel Roll Out Drawers in Lieu of Doors-D Models
- Electric Condensate
- Pan Opening Sizes
- Stainless Steel Legs
- Additional Shelves
- Door Locks
- Single Overshelf
- Double Overself

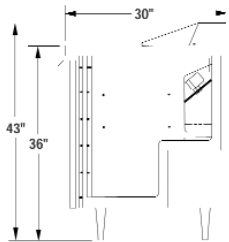


VALUE LINE

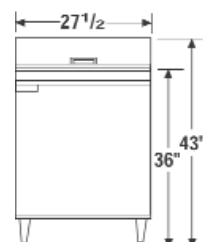
REFRIGERATOR

SPECIFICATIONS

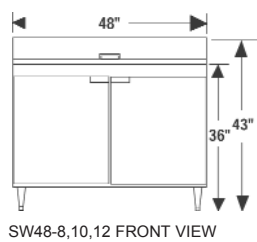
	MODEL SW27-8	MODEL SW48-8	MODEL SW48-10	MODEL SW48-12	MODEL SW60-8	MODEL SW60-12	MODEL SW60-16	MODEL SW72-12	MODEL SW72-18
DIMENSIONAL DATA									
Net Capacity (cu. ft.)	7.4	13.4	13.4	13.4	17.0	17.0	17.0	20.6	20.6
1/6 Size Pans	8	8	10	12	8	12	16	12	18
Width, Overall (in.)	27 ¹ / ₂	48	48	48	60	60	60	72	72
Depth, (incl. Hds. & Bumpers) (in.)	31	31	31	31	31	31	31	31	31
Depth, Body Only (Less Door(s))(in.)	27 ¹ / ₂	27 ¹ / ₂	27 ¹ / ₂	27 ¹ / ₂	27 ¹ / ₂	27 ¹ / ₂	27 ¹ / ₂	27 ¹ / ₂	27 ¹ / ₂
Depth, Cutting Board (Std. Top)	12	12	12	12	12	12	12	12	12
Height, Overall (incl. 6" Legs) (in.)	43	43	43	43	43	43	43	43	43
Shelf Area (sq. ft.)	3.5	6.8	6.8	6.8	8.1	8.1	8.1	10.2	10.2
No. of Shelves	1	2	2	2	2	2	2	3	3
No. of Doors	1	2	2	2	2	2	2	3	3
Condensing Unit Size (H.P.)	1/5	1/5	1/5	1/5	1/4	1/4	1/4	1/4	1/4
Refrigerant	R134a	R134a	R134a	R134a	R134a	R134a	R134a	R134a	R134a
Cabinet Electrical	115/60/1	115/60/1	115/60/1	115/60/1	115/60/1	115/60/1	115/60/1	115/60/1	115/60/1
Amps	6.2	7.1	7.1	7.1	8.2	8.2	8.2	9.0	9.0
Fans	2	3	3	3	3	3	3	4	4
Interior Depth (in.)	20	20	20	20	20	20	20	20	20
Interior Height (in.)	26 ¹ / ₄	26 ¹ / ₄	26 ¹ / ₄	26 ¹ / ₄	26 ¹ / ₄	26 ¹ / ₄	26 ¹ / ₄	26 ¹ / ₄	26 ¹ / ₄
Interior Width (in.)	24 ¹ / ₄	44	44	44	56	56	56	68	69
Shipping Weight (lbs.)	180	267	268	270	309	311	315	385	389
Shipping Height (in.)	43 ¹ / ₄	43 ¹ / ₄	43 ¹ / ₄	43 ¹ / ₄	43 ¹ / ₄	43 ¹ / ₄	43 ¹ / ₄	43 ¹ / ₄	43 ¹ / ₄
Shipping Length (in.)	35 ³ / ₄	64	64	64	68 ¹ / ₄	68 ¹ / ₄	68 ¹ / ₄	80 ¹ / ₄	80 ¹ / ₄
Shipping Depth (in.)	46	46	46	46	46	46	46	46	46



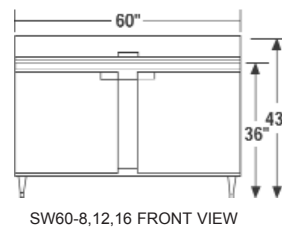
SW SIDE VIEW



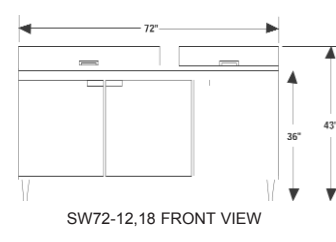
SW27-8 FRONT VIEW



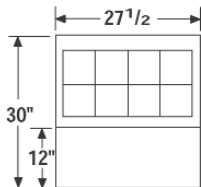
SW48-8,10,12 FRONT VIEW



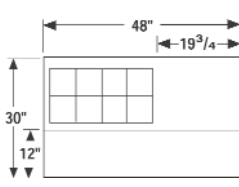
SW60-8,12,16 FRONT VIEW



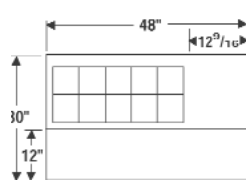
SW72-12,18 FRONT VIEW



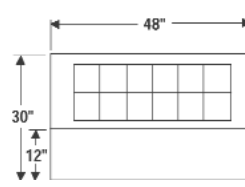
SW27-8 TOP VIEW



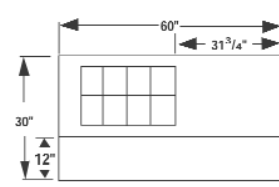
SW48-8 TOP VIEW



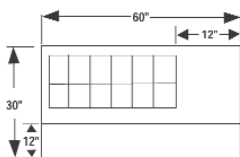
SW48-10 TOP VIEW



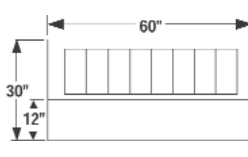
SW48-12 TOP VIEW



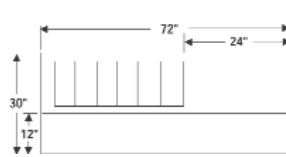
SW60-8 TOP VIEW



SW60-12 TOP VIEW



SW60-16 TOP VIEW



SW72-12 TOP VIEW



SW72-18 TOP VIEW

