

Bally

REFRIGERATORS

VALUE LINE REFRIGERATORS



SW60-24M
(Shown w/Optional Overshelf)

MODELS AVAILABLE

- SW27-12M
- SW48-12M
- SW48-18M
- SW60-12M
- SW60-18M
- SW60-24M
- SW72-18M
- SW72-27M
- SW72-30M



Refrigerator

SANDWICH UNIT REFRIGERATORS W/ MIGHTY TOPS

Standard Features

- Unique Air Flow Distribution allows Pan Product To Maintain 33-41°F Being in Compliance With And Certified Under The New '98 NSF Standard For Preparation Units
- Modern, State-of-the-Art Styling
- Performance Rated Refrigeration System Utilizing Environmentally Safe R-134a Refrigerant
- Easily Serviceable Rear Mounted Compressor
- 2" Non-CFC Polyurethane Foam Insulation
- Spring Loaded, Self-Closing Door
- Magnetic Snap-in Gasket
- Adjustable 6" Legs
- Heavy Duty, Epoxy-coated Steel Shelves
- Interior Hanging Thermometer
- Mighty Tops-3 Rows of Pans
- 10" Deep Full Length Nylon Cutting Board
- Cabinet Construction Consisting of Stainless Steel Front and Top, Aluminum End Panels, Case Back and Interior
- Non-Corrosive, Plasticized Fin Evaporator Coil
- Completely Enclosed, Vented and Removable Case Back
- Automatic, Energy Saving, Non-electric Condensate Disposal
- 1/6 Size Pans, 4" Deep
- 10 ft. Cord and Plug Attached

Optional Features & Accessories

- Casters
- Remote Models – R
- Stainless Steel Interior & Exterior- SS Models
- Stainless Steel End Panels- SA Models
- Stainless Steel Finished Back in Lieu of Aluminum
- Electric Condensate
- Pan Opening Sizes
- Stainless Steel Legs
- Additional Shelves
- Door Locks
- Single Overshelf
- Double Overshelf



VALUE LINE

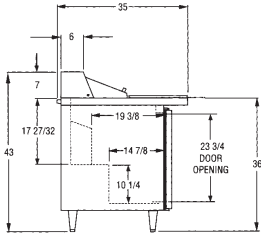
SANDWICH UNITS

CHARACTERISTICS

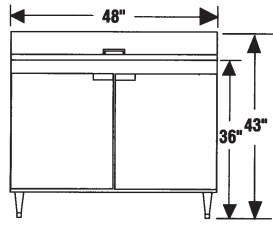
	MODEL SW27-12M	MODEL SW48-12M	MODEL SW48-18M	MODEL SW60-12M	MODEL SW60-18M	MODEL SW60-24M	MODEL SW72-18M	MODEL SW72-27M	MODEL SW72-30M
--	----------------	----------------	----------------	----------------	----------------	----------------	----------------	----------------	----------------

DIMENSIONAL DATA

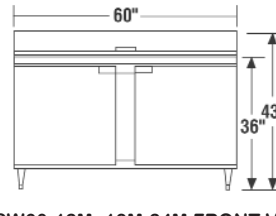
Net Capacity (cu. ft.)	7.4	13.4	13.4	17.0	17.0	17.0	20.6	20.6	20.6
1/6 Size Pans (4" Deep)	12	12	18	12	18	24	18	27	30
Width, Overall (in.)	27 ¹ / ₂	48	48	60	60	60	72	72	72
Depth, Overall (Incl. Hlds.) (in.)	34	34	34	34	34	34	34	34	34
Depth, Body only (Less Door(s) (in.)	27 ¹ / ₂	27 ¹ / ₂	27 ¹ / ₂	27 ¹ / ₂	27 ¹ / ₂	27 ¹ / ₂	27 ¹ / ₂	27 ¹ / ₂	27 ¹ / ₂
Depth, Cutting Board	10	10	10	10	10	10	10	10	10
Height (Incl. 6" Legs)	43	43	43	43	43	43	43	43	43
Shelf Area (sq.ft.)	3.5	6.8	6.8	8.1	8.1	8.1	10.2	10.2	10.2
Shelves	1	2	2	2	2	2	3	3	3
Doors	1	2	2	2	2	2	3	3	3
Condensing Unit Size (H.P.)	1/5	1/5	1/5	1/4	1/4	1/4	1/4	1/4	1/4
Refrigerant	R134a	R134a	R134a	R134a	R134a	R134a	R134a	R134a	R134a
Cabinets Electric	115/60/1	115/60/1	115/60/1	115/60/1	115/60/1	115/60/1	115/60/1	115/60/1	115/60/1
Amps	6.2	7.1	7.1	8.2	8.2	8.2	9.0	9.0	9.0
Fans	2	3	3	3	3	3	4	4	4
Interior Depth (in.)	20	20	20	20	20	20	20	20	20
Interior Height (in.)	26 ¹ / ₄	26 ¹ / ₄	26 ¹ / ₄	26 ¹ / ₄	26 ¹ / ₄	26 ¹ / ₄	26 ¹ / ₄	26 ¹ / ₄	26 ¹ / ₄
Interior Width (in.)	24 1/2	44	44	56	56	56	68	68	68
Shipping Weight (lbs.)	188	282	285	319	322	330	398	414	420
Shipping Height (in.)	43 ¹ / ₄	43 ¹ / ₄	43 ¹ / ₄	43 ¹ / ₄	43 ¹ / ₄	43 ¹ / ₄	43 ¹ / ₄	43 ¹ / ₄	43 ¹ / ₄
Shipping Length (in.)	35 ³ / ₄	64	64	68 ¹ / ₄	68 ¹ / ₄	68 ¹ / ₄	80 ¹ / ₄	80 ¹ / ₄	80 ¹ / ₄
Shipping Depth (in.)	46	46	46	46	46	46	46	46	46



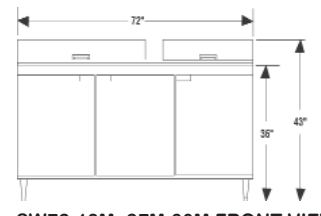
SIDE VIEW DIMENSIONS



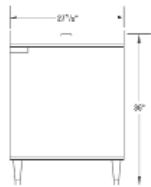
SW48-12M, 18M FRONT VIEW



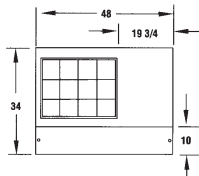
SW60-12M, 18M, 24M FRONT VIEW



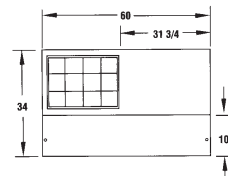
SW72-18M, 27M, 30M FRONT VIEW



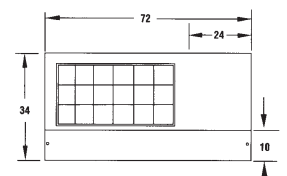
SW27-12M FRONT VIEW



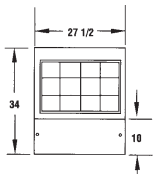
SW48-12M TOP VIEW



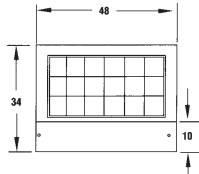
SW60-12M TOP VIEW



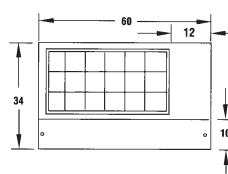
SW72-18M TOP VIEW



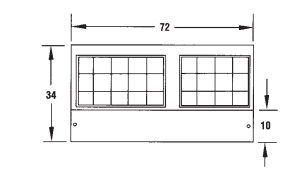
SW27-12M TOP VIEW



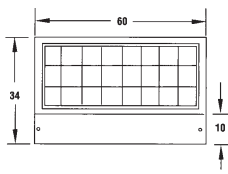
SW48-18M TOP VIEW



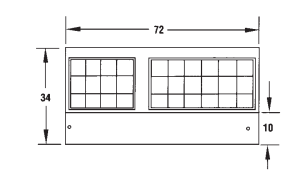
SW60-18M TOP VIEW



SW72-27M TOP VIEW



SW60-24M TOP VIEW



SW72-30M TOP VIEW



A Division of BALMAC International, Inc.
 61 Broadway Suite 1900, New York, NY 10006-2701
 (212) 898-9699 Fax: (212) 514-9234
www.bmil.com - bmil@bmil.com