

Bally

REFRIGERATORS

VALUE LINE REFRIGERATORS

Utilizing Environmentally Safe, CFC-free R-404A Refrigerant



CPT42
(SHOWN W/OPTIONAL OVERSHELF
& GARNISH RACK)



CPT67



CPT92



CPT117

Refrigerator

PIZZA PREPARATION TABLE REFRIGERATORS

Standard Features

- Modern, State-of-the-Art Styling
- Performance Rated Refrigeration System Utilizing Environmentally Safe R-404A Refrigerant
- Exclusive Recessed Pan Rail with Specialized Wrapped Coldwall Allows Pan Product to Maintain 33-41°F Being in Compliance with and Certified Under the New '98 NSF Standard for Preparation Units
- Convenient Top Rail Shut-Off Switch with Separate Temperature Controls for Rail and Base
- Cabinet Construction Consisting of Heavy Gauge #300 Series, Stainless Steel Top, Stainless Steel Front and Case End Panels, Aluminum Case Back Cover and Interior
- Extra Wide 19" High Density, Full Length Polyethylene Cutting Board
- Automatic, Energy Saving, Non-Electric Condensate Disposal System
- Spring Loaded, Self Closing Doors with Magnetic, Snap-In Door Gaskets
- 5" High Swivel Casters
- Heavy-Duty, Long Lasting, Epoxy-Coated Steel Wire Shelves
- Non-Corrosive, Extra Large, Plasticized Fin Evaporator Coil
- High Density, Non-CFC Polyurethane Foamed-in-Place Insulation
- Completely Enclosed, Vented and Removable Case Back
- Easily Accessible and Serviceable Front Slide-Out Condensing Unit
- Interior Hanging Thermometer
- Extra Long 10' Power Supply Cord and Plug Attached

Optional Features & Accessories

- Stainless Steel Interior -SS Models
- Stainless Steel, 6" Deep Insert Pans
- Interior Adjustable, Removable Angle Sides
- Wire Rod, Bun Tray Racks
- Wire Rod, Garnish Racks
- Additional Epoxy Coated Steel Wire Shelves
- Stainless Steel Overshelf Assembly
- Stainless Steel or Black Legs
- Remote Models-R
- Electric Condensate
- Exterior Dial Thermometer
- Two Heavy Duty, Self Closing External Roll-Out Drawers per Section in Lieu of Door
- Stainless Steel Rear Cover



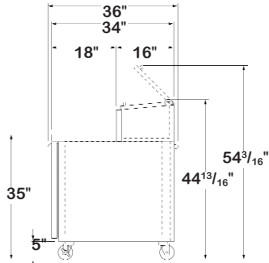
c



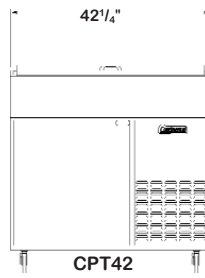


SPECIFICATIONS

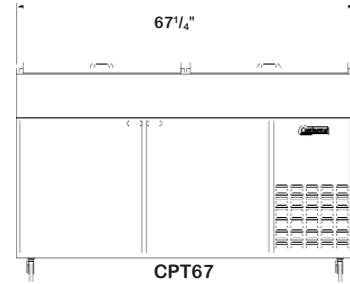
	CPT42	CPT67	CPT92	CPT117
DIMENSIONAL DATA				
Cu. Ft.	8.0	17.0	26.0	35.0
Pan Capacity	(4) ONE-THIRD / (1) ONE-HALF	(9) ONE-THIRD	(12) ONE-THIRD	(16) ONE-THIRD
Ext. Dim. (WxDxH)	42 ¹ / ₄ x36x44 ¹³ / ₁₆	67 ¹ / ₄ x36x44 ¹³ / ₁₆	92 ¹ / ₄ x36x44 ¹³ / ₁₆	117 ¹ / ₄ x36x44 ¹³ / ₁₆
Shelf Area	3.8	8.0	12.4	16.8
Shelves	1	2	3	4
Doors	1	2	3	4
Condensing Unit Size (H.P.)	1/4	1/3	1/3	1/2
Refrigerant	R-404A	R-404A	R-404A	R-404A
Cabinet Electrical	115/60/1	115/60/1	115/60/1	115/60/1
Amps	5.2	7.6	7.8	10.9
Fans	1	2	2	3
Interior Depth (in.)	28 ¹ / ₂	28 ¹ / ₂	28 ¹ / ₂	28 ¹ / ₂
Interior Height (in.)	26	26	26	26
Interior Width (in.)	22	47	72	97
Clear Door Width (in.)	21 ³ / ₈	21 ³ / ₈	21 ³ / ₈	21 ³ / ₈
Clear Door Height (in.)	23 ³ / ₈	23 ³ / ₈	23 ³ / ₈	23 ³ / ₈
Shipping Weight (lbs.)	355	495	605	725
Shipping Height (in.)	43 ³ / ₄	43 ³ / ₄	43 ³ / ₄	43 ³ / ₄
Shipping Length (in.)	44 ¹ / ₄	69 ¹ / ₄	94 ¹ / ₄	119 ¹ / ₄
Shipping Depth (in.)	36	36	36	36



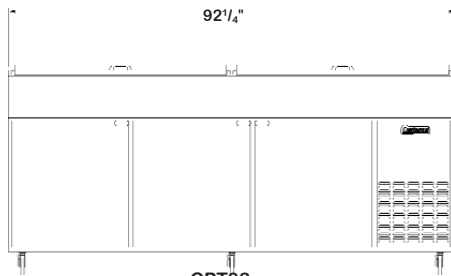
SIDE VIEW



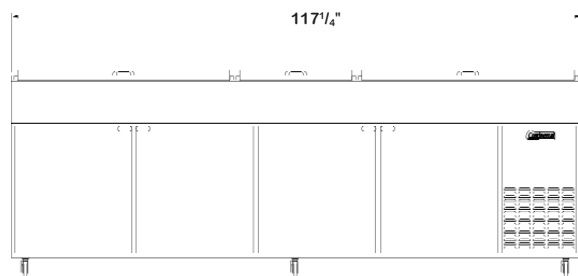
CPT42
FRONT VIEW



CPT67
FRONT VIEW



CPT92
FRONT VIEW



CPT117
FRONT VIEW



A Division of BALMAC International, Inc.
 61 Broadway Suite 1900, New York, NY 10006-2701
 (212) 898-9699 Fax: (212) 514-9234
www.bmil.com - bmil@bmil.com